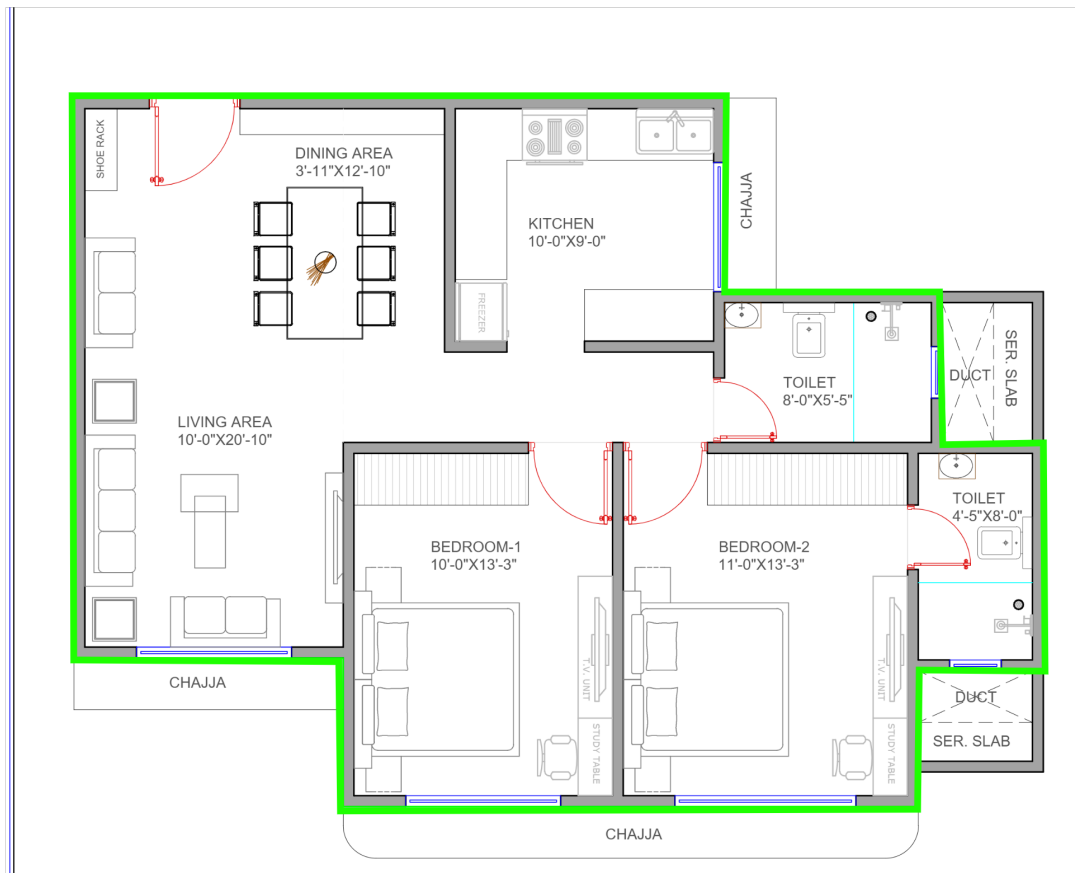


Vedic Vastu Report

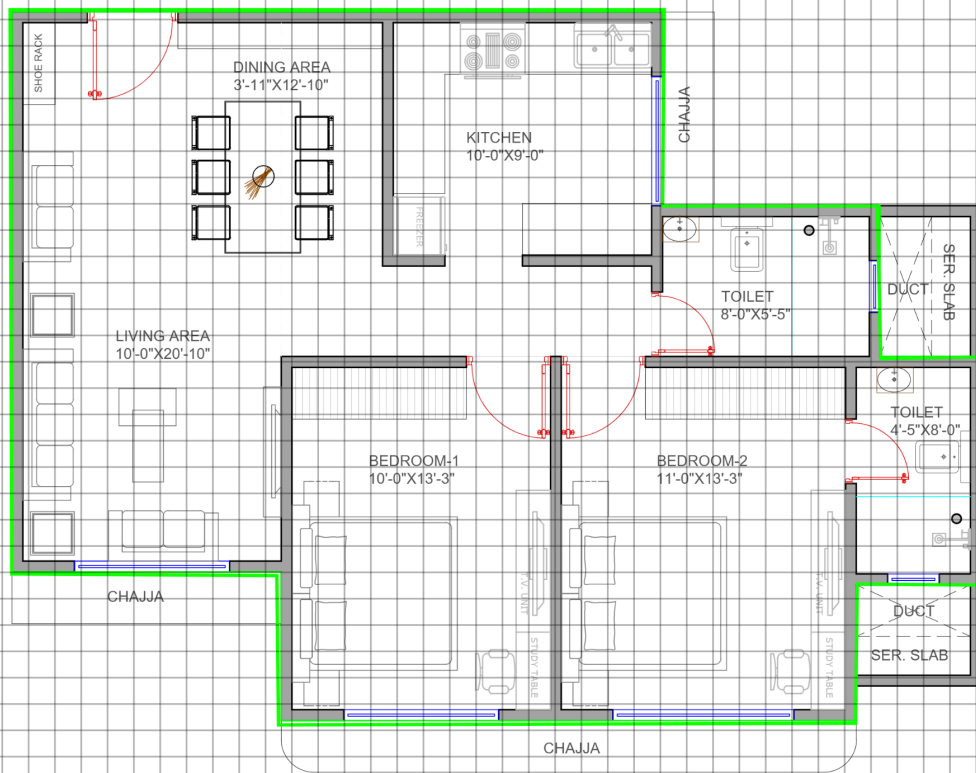
Vedic Vastu Reports

| | |
|----|-------------------------------|
| 1 | Vadic Mahavastu Chakra |
| 2 | Vastu Numbers 81 (Vadic) |
| 3 | Khanija Dhatu |
| 4 | 16 Directional Domestic Vastu |
| 5 | Direction Deity Planet |
| 6 | Devata Khanij |
| 7 | Devata Bhojan |
| 8 | Devata Bhojan Aadi |
| 9 | Devata Chinha |
| 10 | Devata Chinha Aadi |
| 11 | Muhurat Vichar |
| 12 | Seharumkh Achintya Vibhav |
| 13 | Vedic Devata Numbers 81 |
| 14 | Disha Gandha |
| 15 | Devata Nighat |
| 16 | Nighantu + Artha |
| 17 | Vedic 45 Devata (with name) |
| 18 | Vedic 45 Devata Table |
| 19 | Vedic 45 Devata Bar Chart |

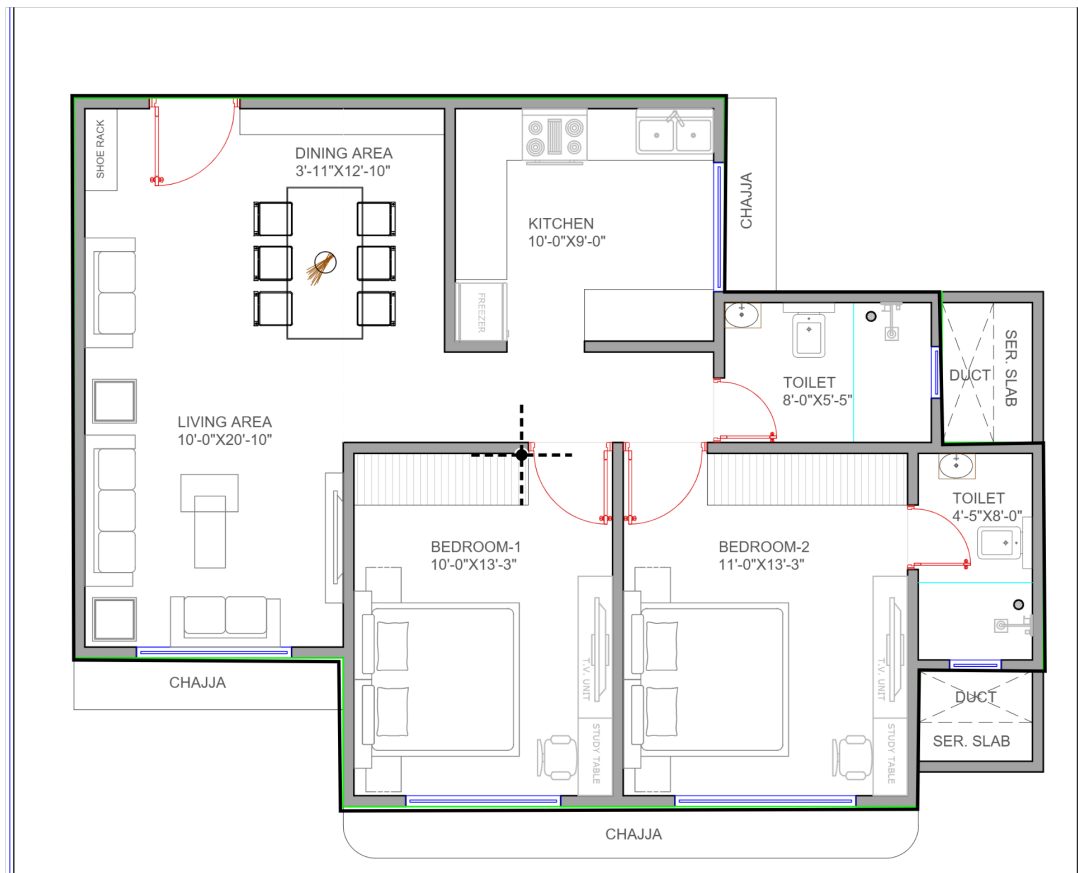
Floor plan



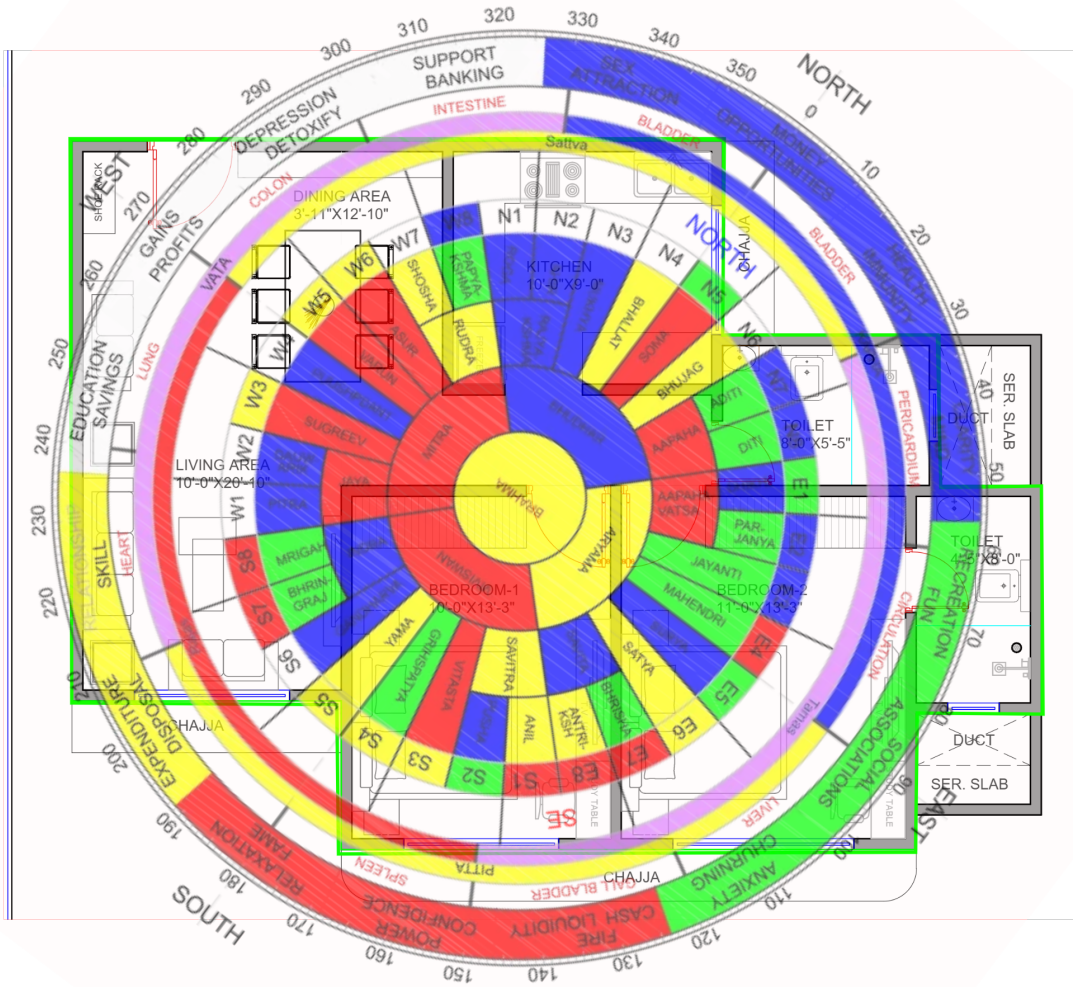
Floor plan with grid



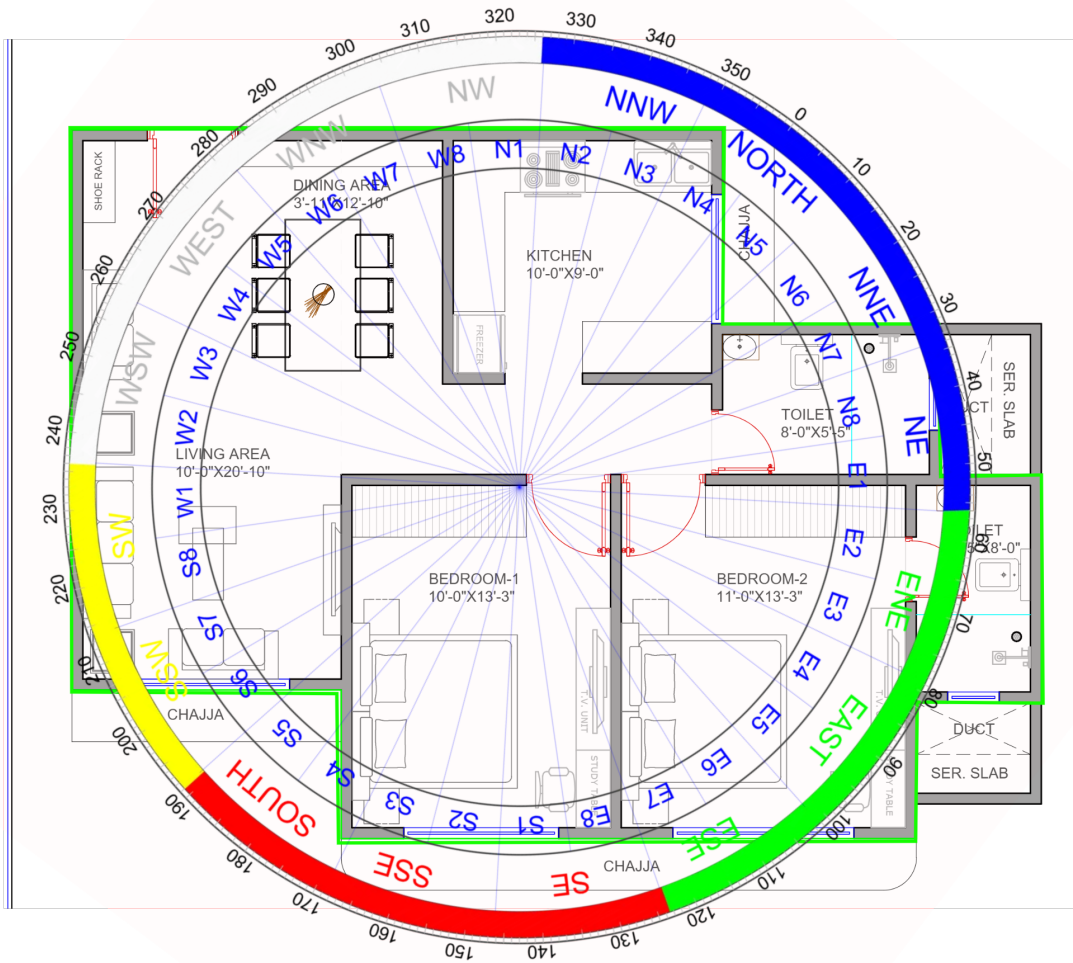
Center analysis



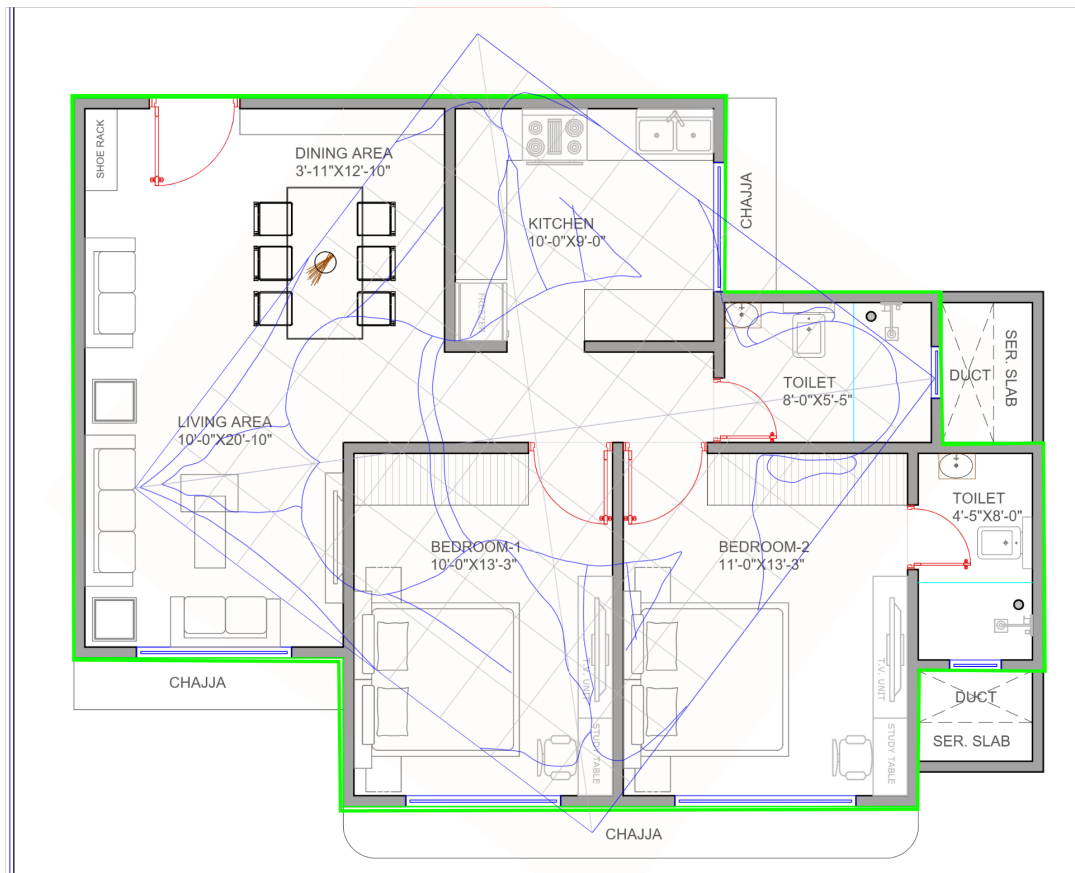
Mahavastu Chakra



Shakti Chakra



Floor plan with VPM



8 Zones Analysis



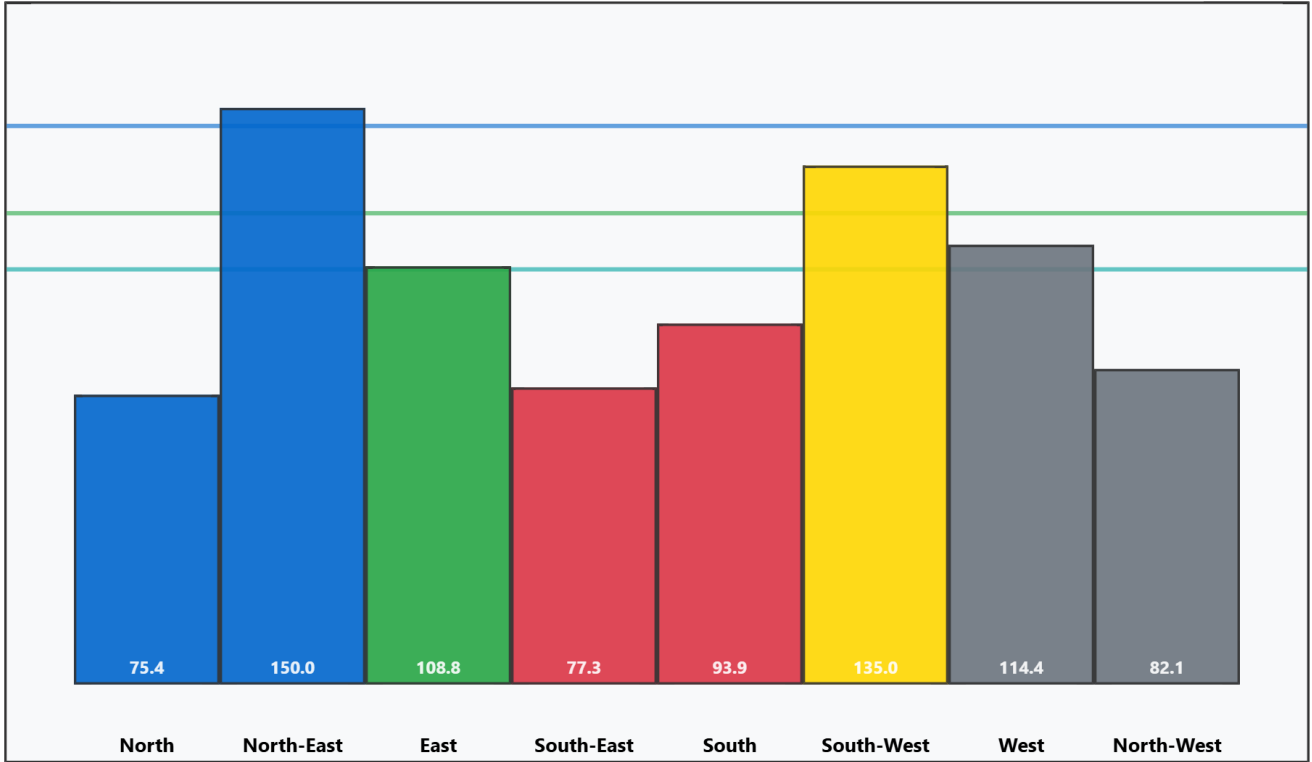
8 Zones Table

MAX VALUE **MIN VALUE** **AVG AREA**
150.0 **75.4** **104.6**

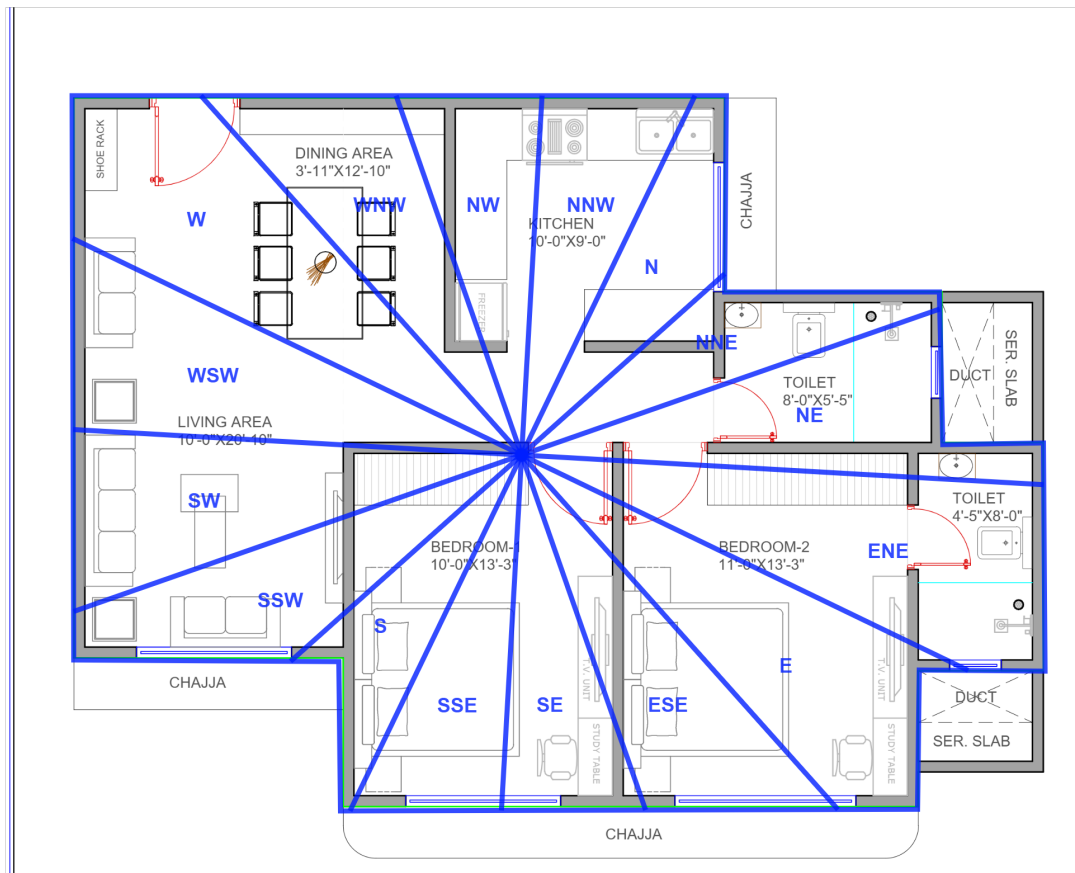
| DIRECTION | North | North-East | East | South-East | South | South-West | West | North-West |
|-----------|-------|------------|-------|------------|-------|------------|-------|------------|
| AREA | 75.4 | 150.0 | 108.8 | 77.3 | 93.9 | 135.0 | 114.4 | 82.1 |
| AVG AREA | 104.6 | 104.6 | 104.6 | 104.6 | 104.6 | 104.6 | 104.6 | 104.6 |
| MAX LINE | 127.3 | 127.3 | 127.3 | 127.3 | 127.3 | 127.3 | 127.3 | 127.3 |
| MIN LINE | 90.0 | 90.0 | 90.0 | 90.0 | 90.0 | 90.0 | 90.0 | 90.0 |

8 Zones Bar Chart

MAX VALUE **MIN VALUE** **AVG AREA**
150.0 **75.4** **104.6**



16 Zones Analysis



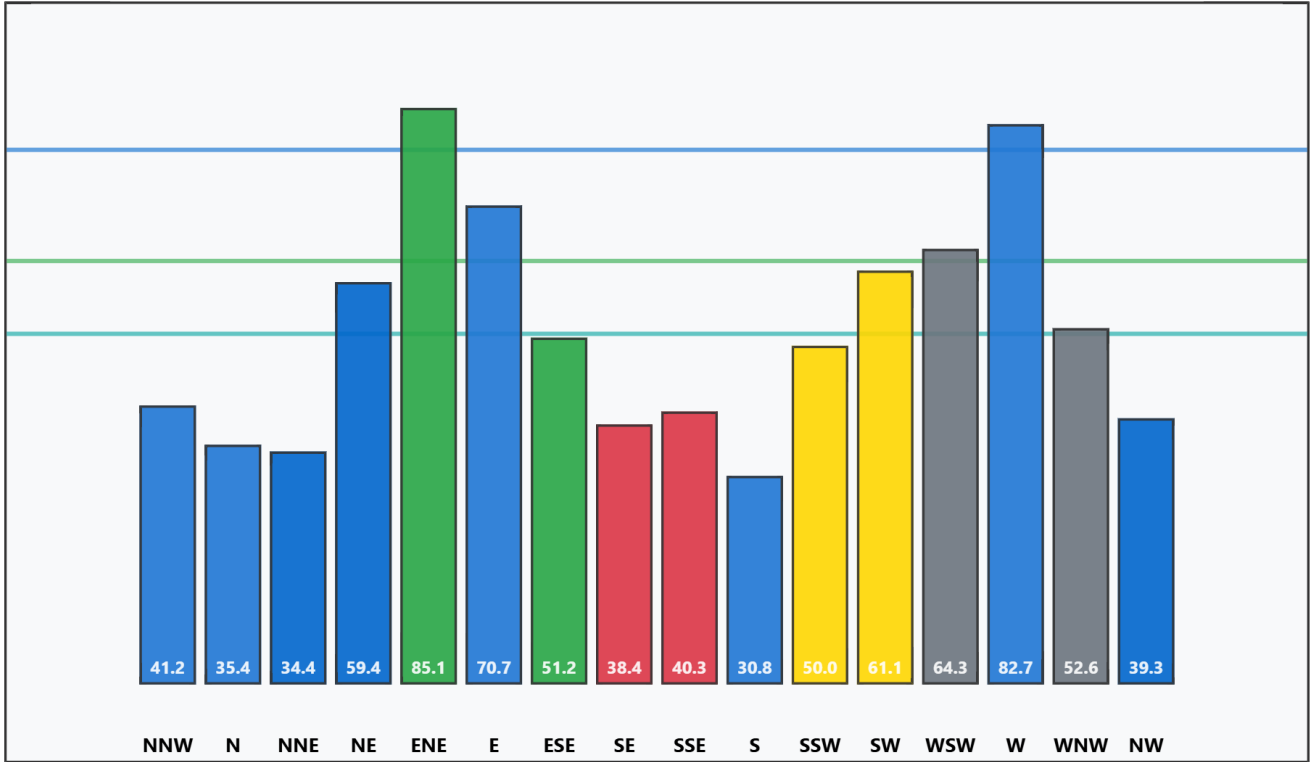
16 Zones Tables

MAX VALUE **MIN VALUE** **AVG AREA**
85.1 **30.8** **52.3**

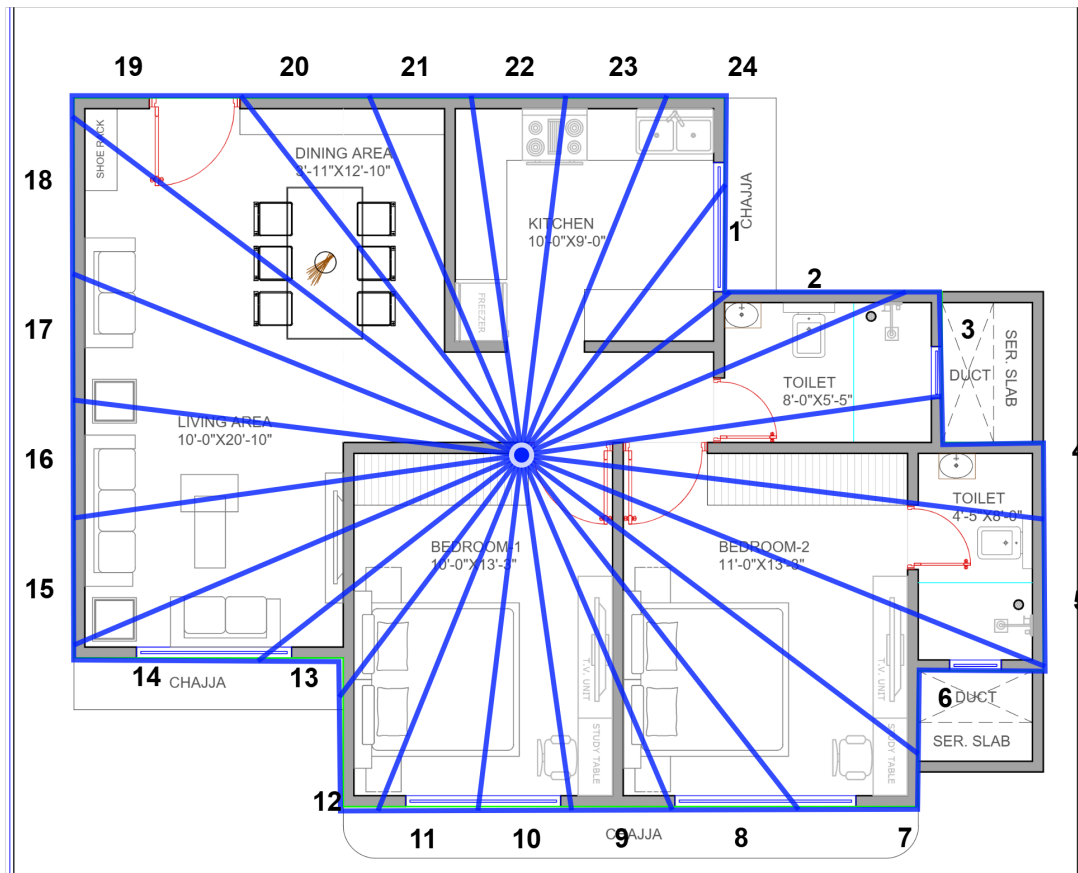
| | | | | | | | | | | | | | | | | |
|------------|----------|------------|-----------|------------|----------|------------|-----------|------------|----------|------------|-----------|------------|----------|------------|-----------|------------------|
| 41.2 | 35.4 | 34.4 | 59.4 | 85.1 | 70.7 | 51.2 | 38.4 | 40.3 | 30.8 | 50.0 | 61.1 | 64.3 | 82.7 | 52.6 | 39.3 | AREA |
| 52.3 | 52.3 | 52.3 | 52.3 | 52.3 | 52.3 | 52.3 | 52.3 | 52.3 | 52.3 | 52.3 | 52.3 | 52.3 | 52.3 | 52.3 | 52.3 | AVG AREA |
| 68.7 | 68.7 | 68.7 | 68.7 | 68.7 | 68.7 | 68.7 | 68.7 | 68.7 | 68.7 | 68.7 | 68.7 | 68.7 | 68.7 | 68.7 | 68.7 | MAX LINE |
| 41.5 | 41.5 | 41.5 | 41.5 | 41.5 | 41.5 | 41.5 | 41.5 | 41.5 | 41.5 | 41.5 | 41.5 | 41.5 | 41.5 | 41.5 | 41.5 | MIN LINE |
| NNW | N | NNE | NE | ENE | E | ESE | SE | SSE | S | SSW | SW | WSW | W | WNW | NW | DIRECTION |

16 Zones Bar Chart

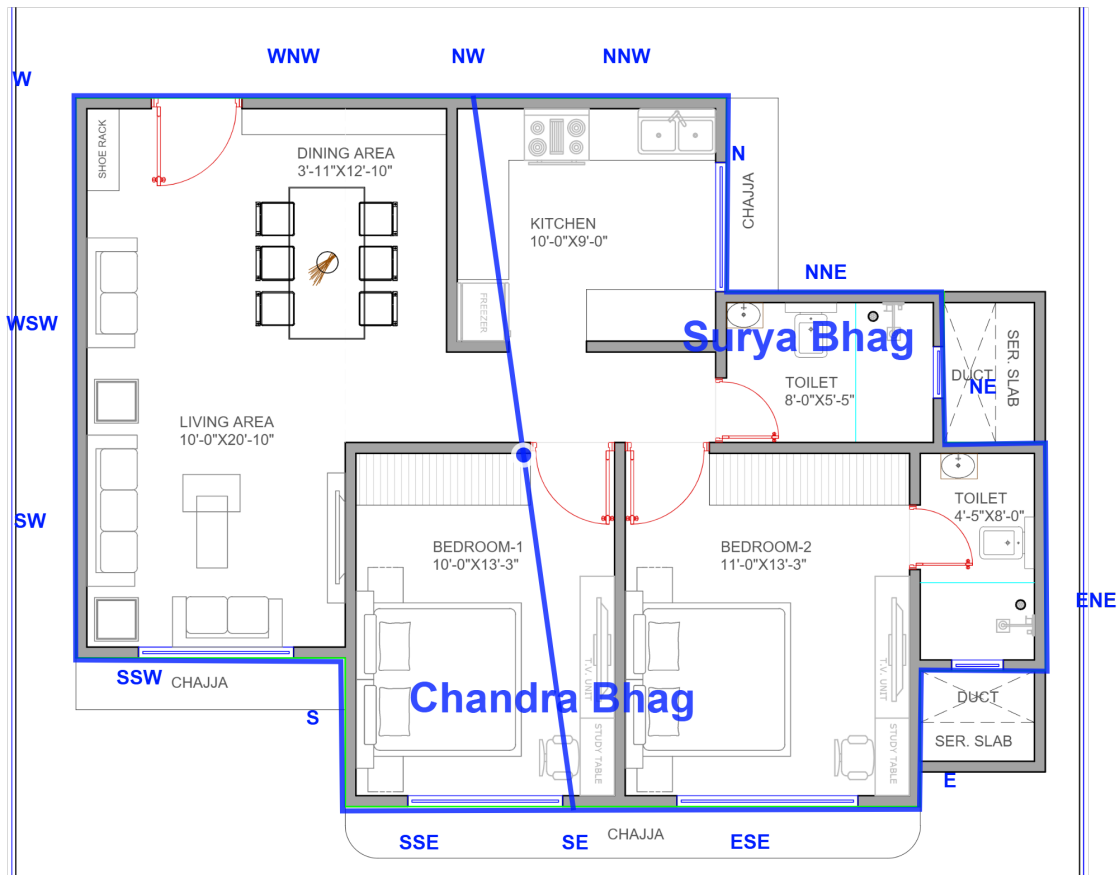
MAX VALUE **MIN VALUE** **AVG AREA**
85.1 **30.8** **52.3**



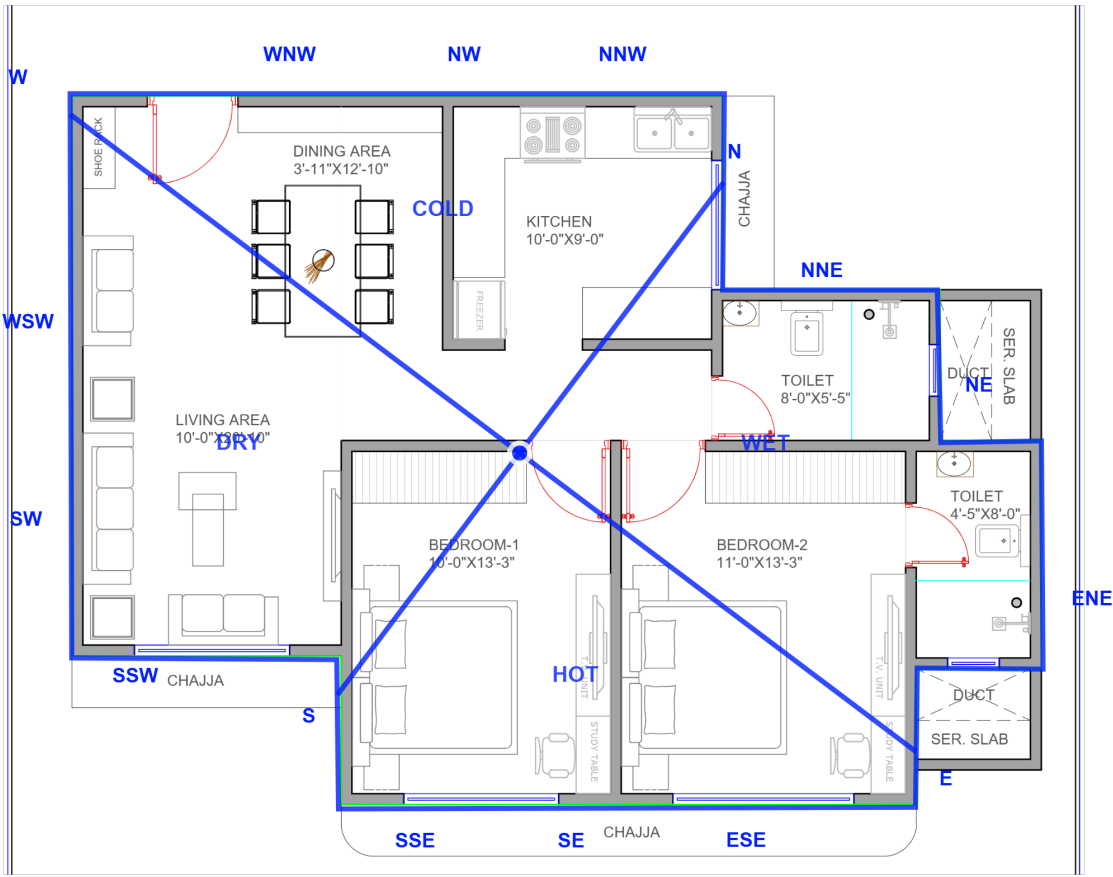
24 Zones Analysis



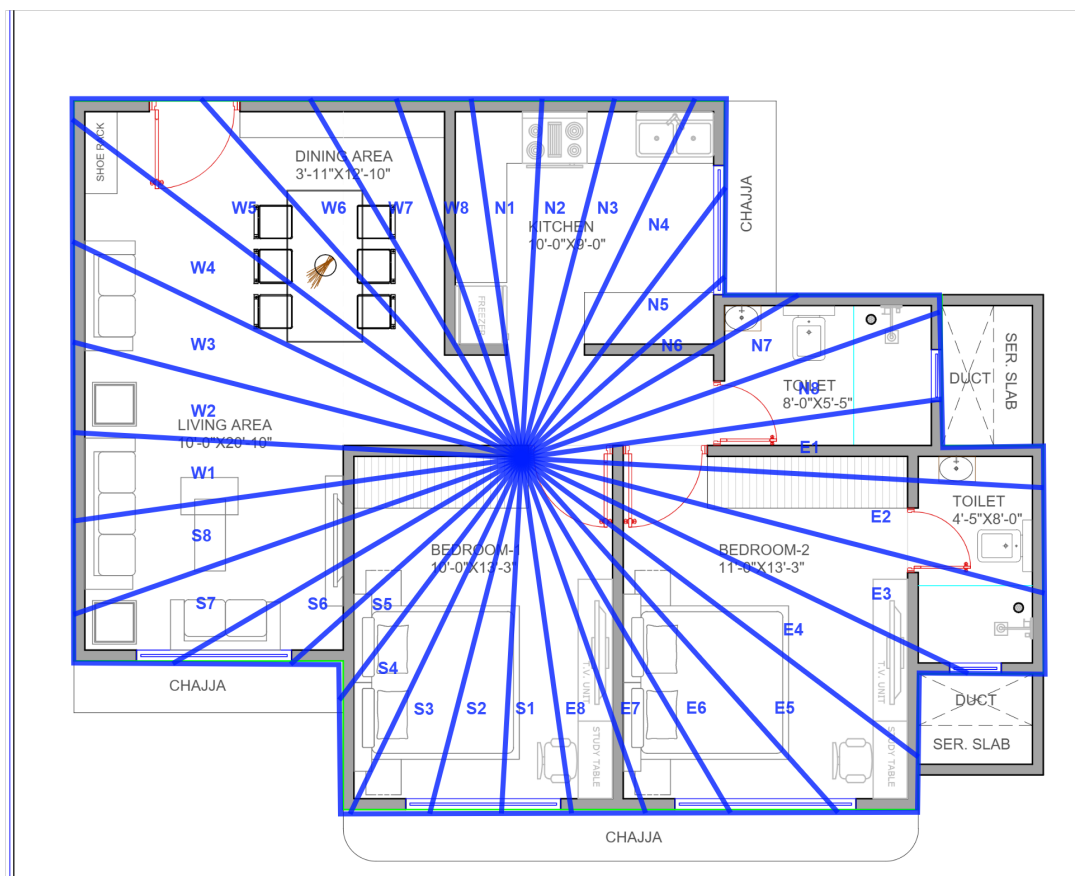
Surya Chandra Bhag



4 State Analysis



32 Mahavastu Zones



32 Mahavastu Table

MAX VALUE **MIN VALUE** **AVG AREA**
43.8 **11.8** **26.1**

Directions 1-11

| N5 | N6 | N7 | N8 | E1 | E2 | E3 | E4 | E5 | E6 | E7 | DIRECTION |
|------|------|------|------|------|------|------|------|------|------|------|-----------|
| 13.5 | 11.8 | 22.6 | 27.5 | 31.9 | 41.3 | 43.8 | 32.9 | 37.8 | 28.6 | 22.6 | AREA |
| 26.1 | 26.1 | 26.1 | 26.1 | 26.1 | 26.1 | 26.1 | 26.1 | 26.1 | 26.1 | 26.1 | AVG AREA |
| 35.0 | 35.0 | 35.0 | 35.0 | 35.0 | 35.0 | 35.0 | 35.0 | 35.0 | 35.0 | 35.0 | MAX LINE |
| 19.0 | 19.0 | 19.0 | 19.0 | 19.0 | 19.0 | 19.0 | 19.0 | 19.0 | 19.0 | 19.0 | MIN LINE |

Directions 12-22

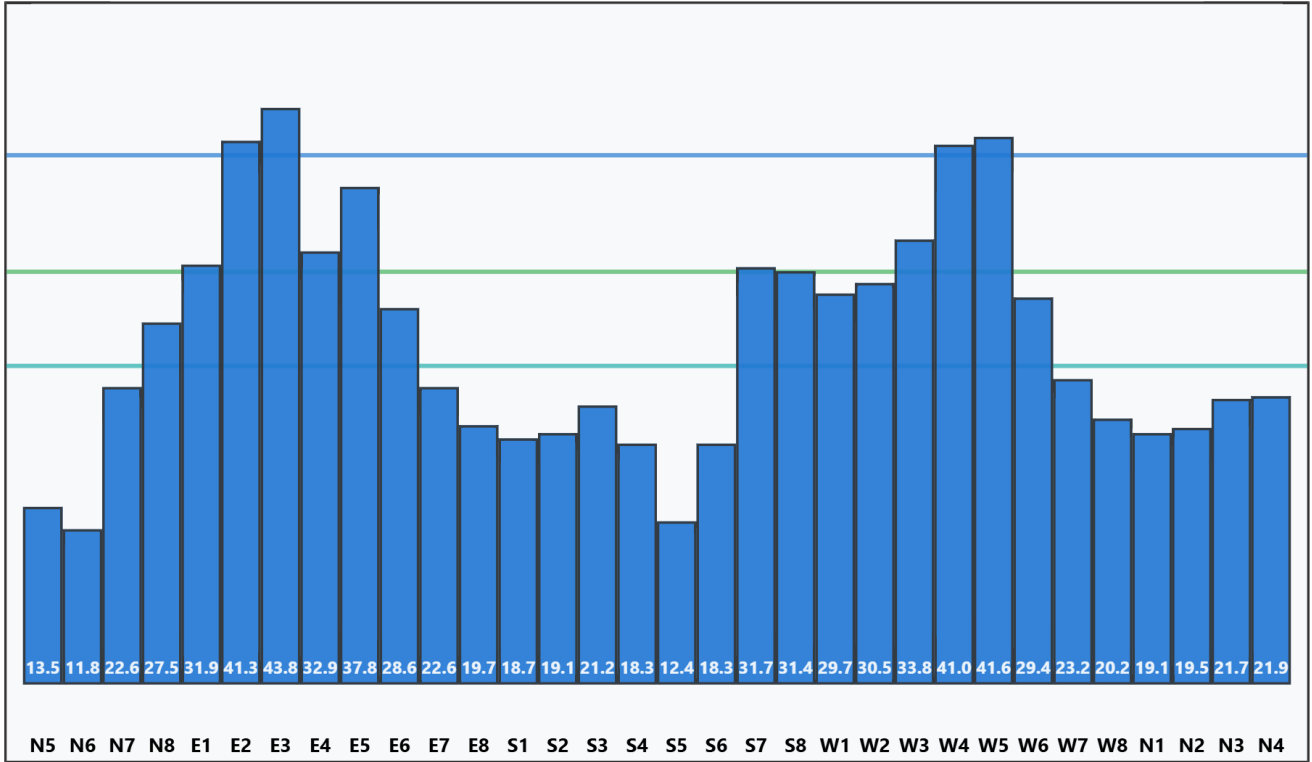
| E8 | S1 | S2 | S3 | S4 | S5 | S6 | S7 | S8 | W1 | W2 | DIRECTION |
|------|------|------|------|------|------|------|------|------|------|------|-----------|
| 19.7 | 18.7 | 19.1 | 21.2 | 18.3 | 12.4 | 18.3 | 31.7 | 31.4 | 29.7 | 30.5 | AREA |
| 26.1 | 26.1 | 26.1 | 26.1 | 26.1 | 26.1 | 26.1 | 26.1 | 26.1 | 26.1 | 26.1 | AVG AREA |
| 35.0 | 35.0 | 35.0 | 35.0 | 35.0 | 35.0 | 35.0 | 35.0 | 35.0 | 35.0 | 35.0 | MAX LINE |
| 19.0 | 19.0 | 19.0 | 19.0 | 19.0 | 19.0 | 19.0 | 19.0 | 19.0 | 19.0 | 19.0 | MIN LINE |

Directions 23-32

| W3 | W4 | W5 | W6 | W7 | W8 | N1 | N2 | N3 | N4 | DIRECTION |
|------|------|------|------|------|------|------|------|------|------|-----------|
| 33.8 | 41.0 | 41.6 | 29.4 | 23.2 | 20.2 | 19.1 | 19.5 | 21.7 | 21.9 | AREA |
| 26.1 | 26.1 | 26.1 | 26.1 | 26.1 | 26.1 | 26.1 | 26.1 | 26.1 | 26.1 | AVG AREA |
| 35.0 | 35.0 | 35.0 | 35.0 | 35.0 | 35.0 | 35.0 | 35.0 | 35.0 | 35.0 | MAX LINE |
| 19.0 | 19.0 | 19.0 | 19.0 | 19.0 | 19.0 | 19.0 | 19.0 | 19.0 | 19.0 | MIN LINE |

32 Mahavastu Bar Chart

MAX VALUE **MIN VALUE** **AVG AREA**
43.8 **11.8** **26.1**



Devata Names

| SR | Devata NAME | SR | Devata NAME | SR | Devata NAME |
|----|--------------|----|-------------|----|-------------|
| 1 | BRAHMA | 16 | JAYANTI | 31 | DAUWARIK |
| 2 | BHUDHAR | 17 | MAHENDRI | 32 | SUGREEV |
| 3 | ARYAMA | 18 | SURYA | 33 | PUUSHPDANT |
| 4 | VIVISWAN | 19 | SATYA | 34 | VARUN |
| 5 | MITRA | 20 | BHRISHA | 35 | ASUR |
| 6 | AAPAHA | 21 | ANTRIKSH | 36 | SHOSHA |
| 7 | AAPAHA-VATSA | 22 | ANIL | 37 | PAPYA-KSHMA |
| 8 | SAVITA | 23 | PUSHA | 38 | ROGA |
| 9 | SAVITRA | 24 | VITASTA | 39 | AHIR |
| 10 | INDRA | 25 | GRIHSPATYA | 40 | MUKHYA |
| 11 | JAYA | 26 | YAMA | 41 | BHALLAT |
| 12 | RUDRA | 27 | GANDHARVA | 42 | SOMA |
| 13 | RAJYA-KSHMA | 28 | BHRINGRAJ | 43 | BHUJAG |
| 14 | SHIKHI | 29 | MRIGAH | 44 | ADITI |
| 15 | PARJANYA | 30 | PITRA | 45 | DITI |

Modern 45 Devata (with name) - Table

4 Modern Devata

| | | | | | |
|-------------|------|-------------|------|-------------|--|
| MAX 38.6 | | MIN 16.9 | | AVG 30.7 | |
| 2 | 3 | 4 | 5 | BLOCK | |
| 38.6 | 34.4 | 16.9 | 32.7 | AREA | |
| 30.7 | 30.7 | 30.7 | 30.7 | AVG AREA | |
| 34.6 | 34.6 | 34.6 | 34.6 | MAX LINE | |
| 23.8 | 23.8 | 23.8 | 23.8 | MIN LINE | |

8 Modern Devata

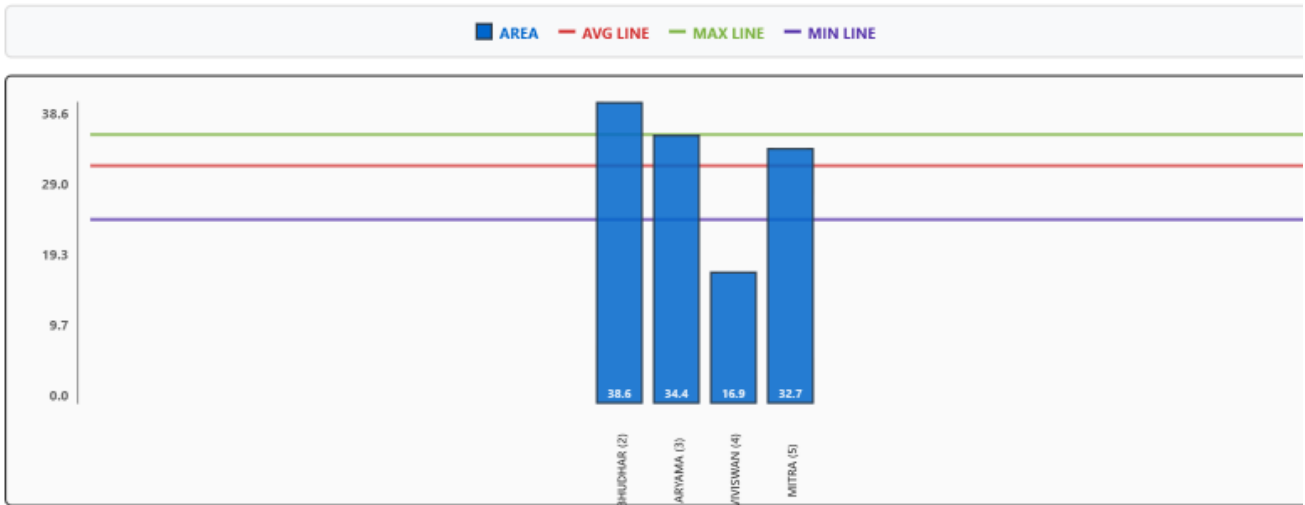
| | | | | | | | | |
|-------------|------|------------|------|-------------|------|------|------|----------|
| MAX 25.1 | | MIN 8.2 | | AVG 15.8 | | | | |
| 6 | 7 | 8 | 9 | 10 | 11 | 12 | 13 | BLOCK |
| 8.2 | 15.1 | 25.1 | 22.0 | 16.0 | 18.0 | 12.1 | 10.0 | AREA |
| 15.8 | 15.8 | 15.8 | 15.8 | 15.8 | 15.8 | 15.8 | 15.8 | AVG AREA |
| 20.5 | 20.5 | 20.5 | 20.5 | 20.5 | 20.5 | 20.5 | 20.5 | MAX LINE |
| 12.0 | 12.0 | 12.0 | 12.0 | 12.0 | 12.0 | 12.0 | 12.0 | MIN LINE |

32 Modern Devata

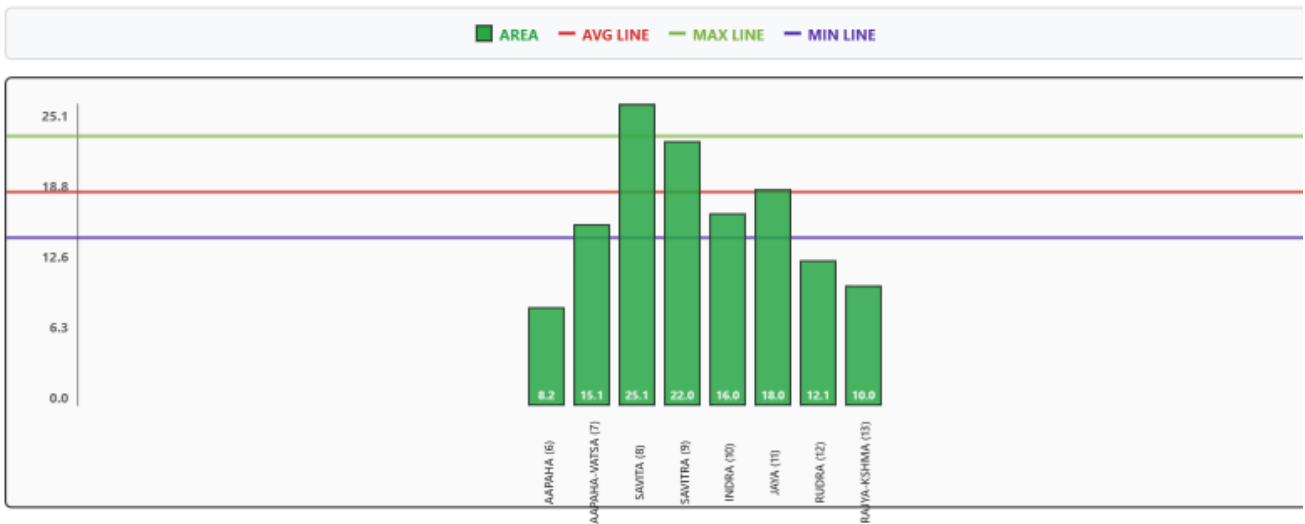
| | | | | | | | | | | | | | | | | | | | | | | | | | | | | | | | | | |
|-------------|------|------------|------|-------------|------|------|------|------|------|------|------|------|------|------|------|------|------|------|------|------|------|------|------|------|------|------|------|------|------|------|------|-------|----------|
| MAX 18.1 | | MIN 5.6 | | AVG 11.3 | | | | | | | | | | | | | | | | | | | | | | | | | | | | | |
| 14 | 15 | 16 | 17 | 18 | 19 | 20 | 21 | 22 | 23 | 24 | 25 | 26 | 27 | 28 | 29 | 30 | 31 | 32 | 33 | 34 | 35 | 36 | 37 | 38 | 39 | 40 | 41 | 42 | 43 | 44 | 45 | BLOCK | |
| 5.9 | 5.6 | 9.1 | 12.0 | 14.2 | 18.1 | 17.1 | 15.8 | 15.1 | 12.5 | 9.9 | 8.6 | 8.2 | 8.4 | 9.3 | 7.7 | 6.0 | 8.0 | 12.3 | 13.7 | 13.0 | 13.3 | 14.8 | 18.0 | 17.3 | 12.8 | 10.2 | 8.8 | 8.4 | 8.5 | 9.5 | 8.6 | AREA | |
| 11.3 | 11.3 | 11.3 | 11.3 | 11.3 | 11.3 | 11.3 | 11.3 | 11.3 | 11.3 | 11.3 | 11.3 | 11.3 | 11.3 | 11.3 | 11.3 | 11.3 | 11.3 | 11.3 | 11.3 | 11.3 | 11.3 | 11.3 | 11.3 | 11.3 | 11.3 | 11.3 | 11.3 | 11.3 | 11.3 | 11.3 | 11.3 | 11.3 | AVG AREA |
| 14.7 | 14.7 | 14.7 | 14.7 | 14.7 | 14.7 | 14.7 | 14.7 | 14.7 | 14.7 | 14.7 | 14.7 | 14.7 | 14.7 | 14.7 | 14.7 | 14.7 | 14.7 | 14.7 | 14.7 | 14.7 | 14.7 | 14.7 | 14.7 | 14.7 | 14.7 | 14.7 | 14.7 | 14.7 | 14.7 | 14.7 | 14.7 | 14.7 | MAX LINE |
| 8.4 | 8.4 | 8.4 | 8.4 | 8.4 | 8.4 | 8.4 | 8.4 | 8.4 | 8.4 | 8.4 | 8.4 | 8.4 | 8.4 | 8.4 | 8.4 | 8.4 | 8.4 | 8.4 | 8.4 | 8.4 | 8.4 | 8.4 | 8.4 | 8.4 | 8.4 | 8.4 | 8.4 | 8.4 | 8.4 | 8.4 | 8.4 | 8.4 | MIN LINE |

Modern 45 Devata (with name) - Chart

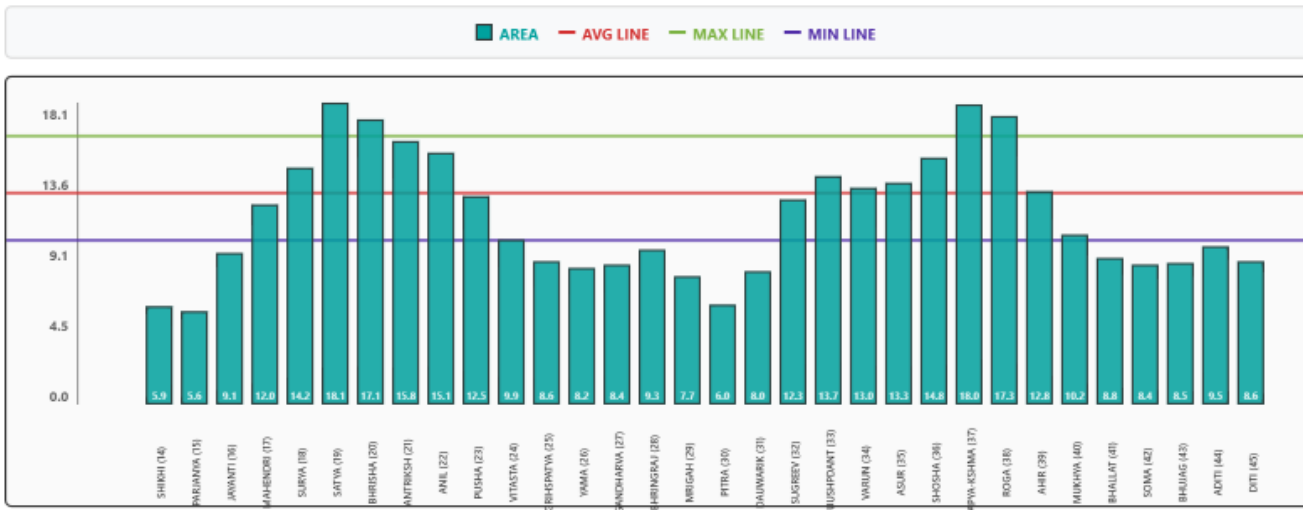
4 Modern Devata



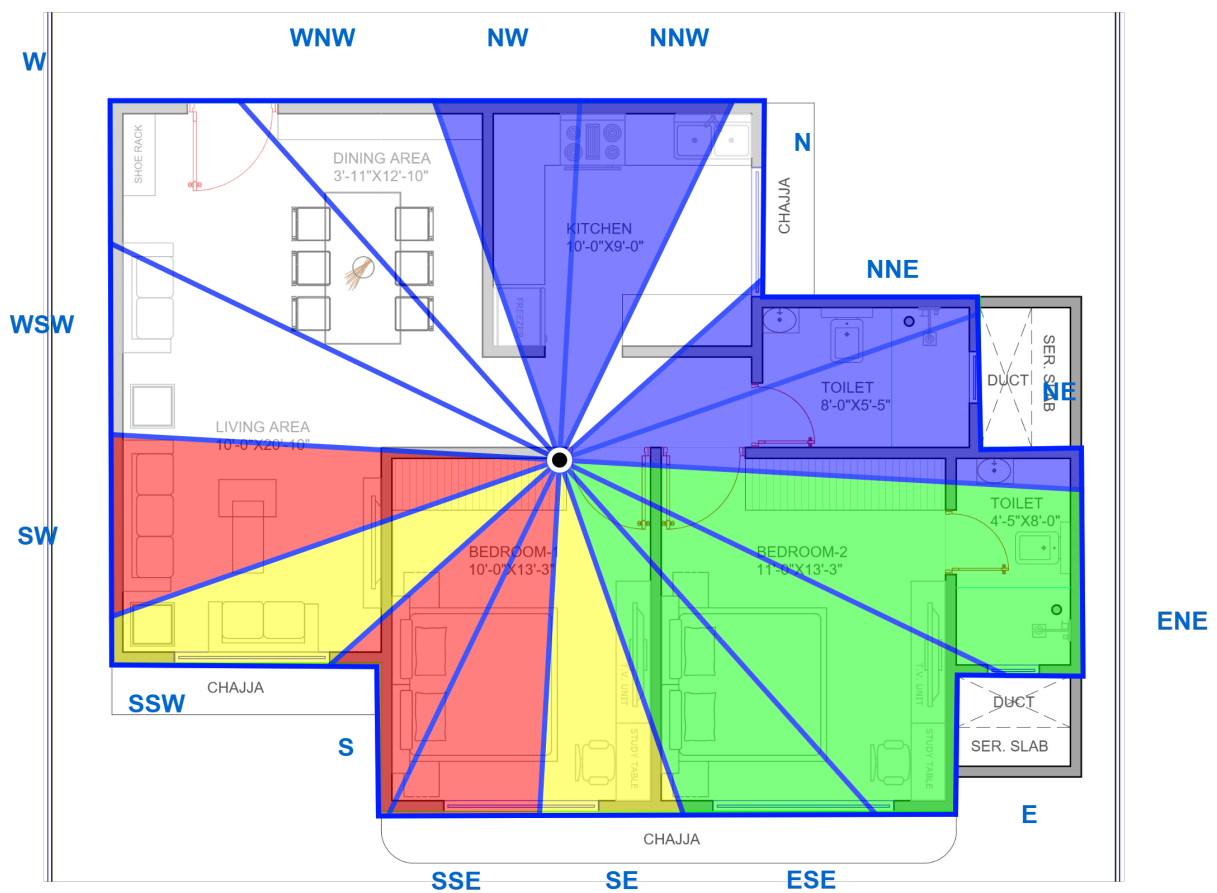
8 Modern Devata



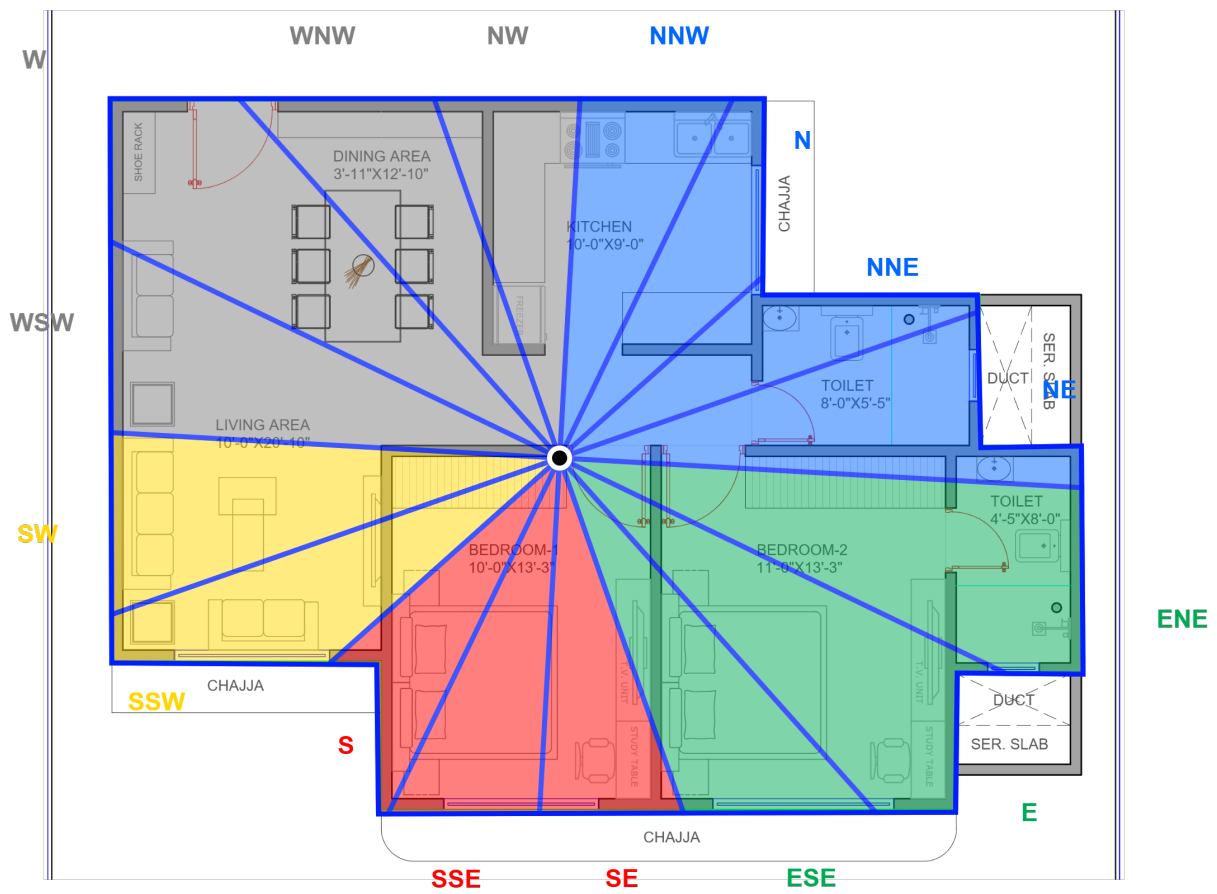
32 Modern Devata



Coloured Zone



Modern 5 Elemental Zone



Modern 5 Elemental Pie Chart



FIRE
13.1%



EARTH
13.3%



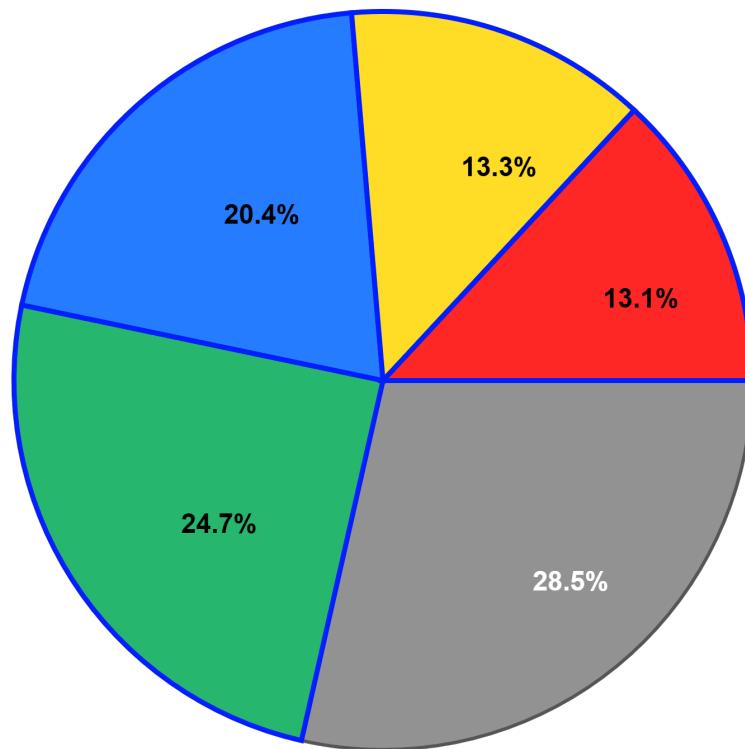
SPACE
28.5%



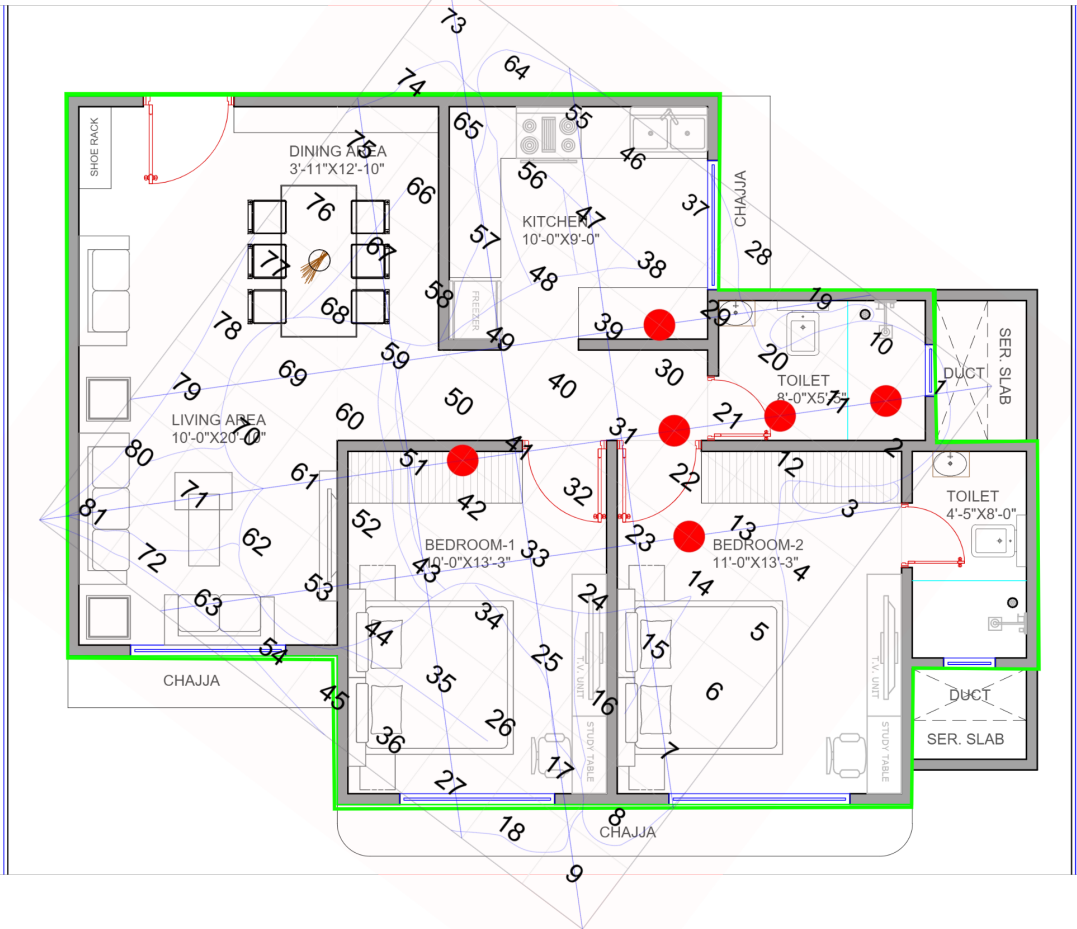
WATER
20.4%



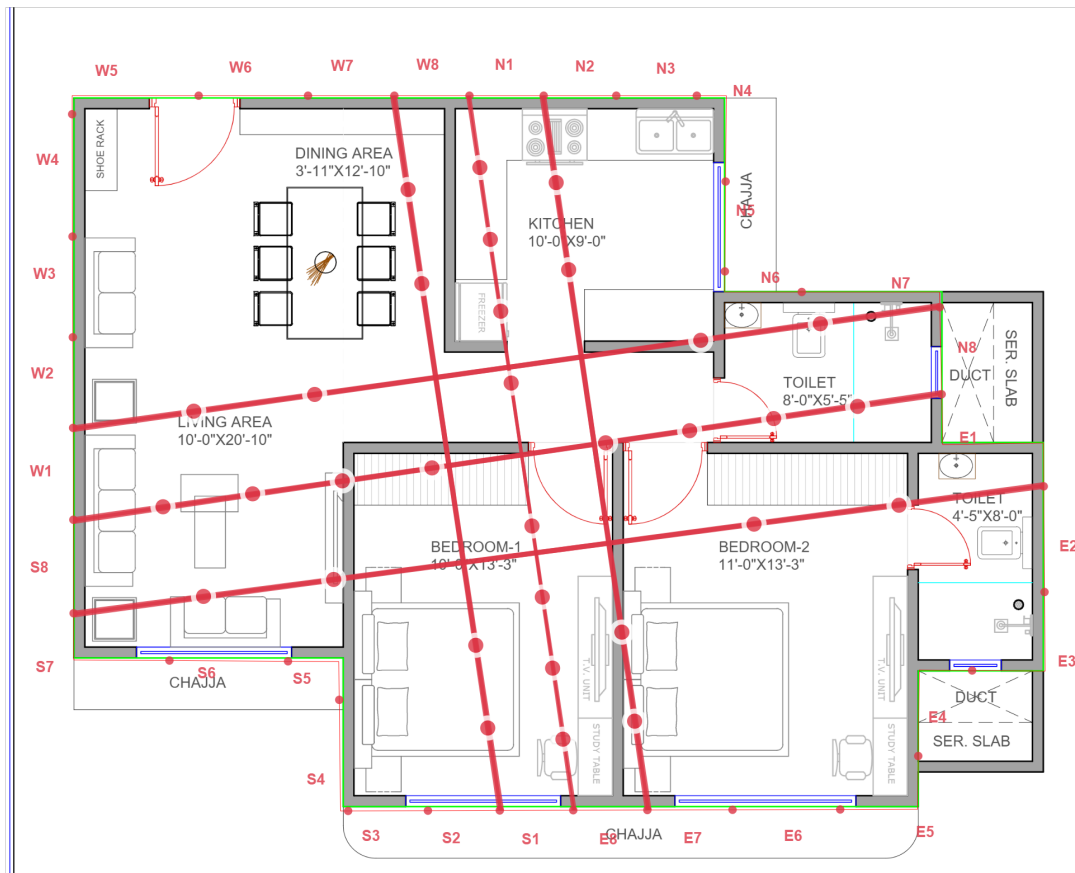
AIR
24.7%



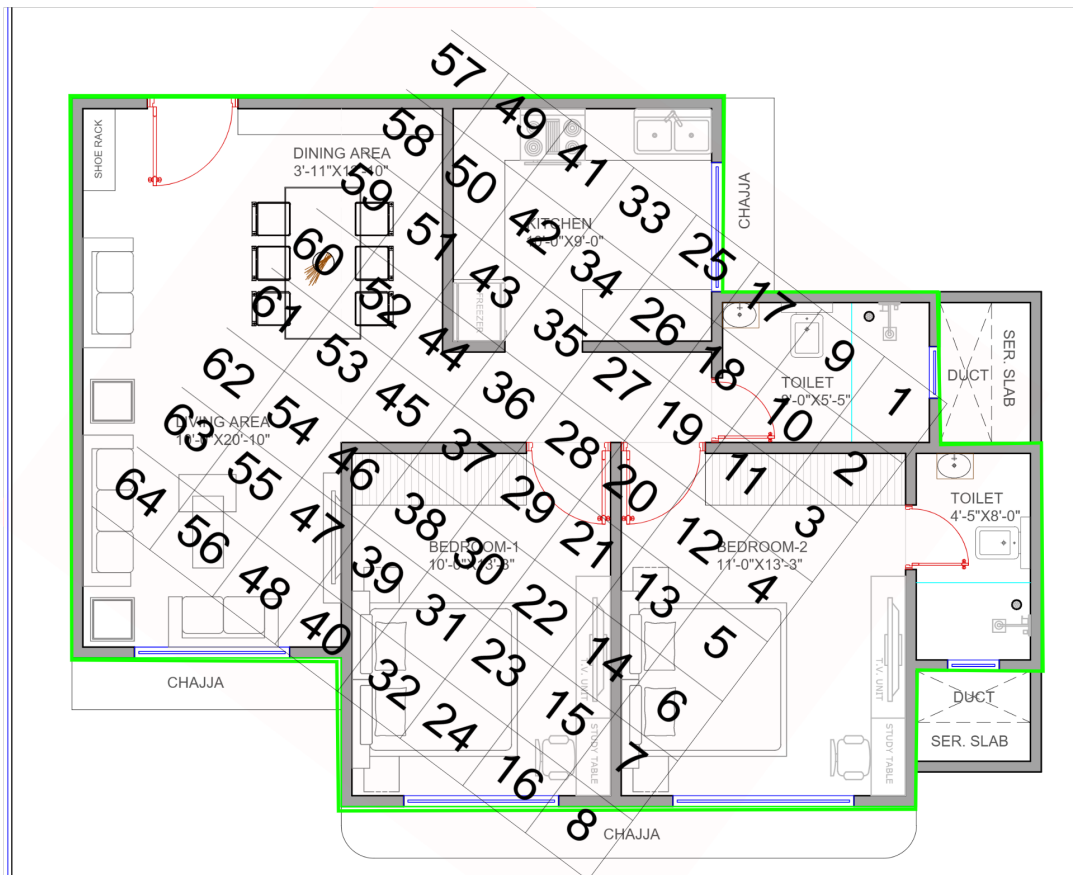
Marmsthan (Shanmahanti) Analysis



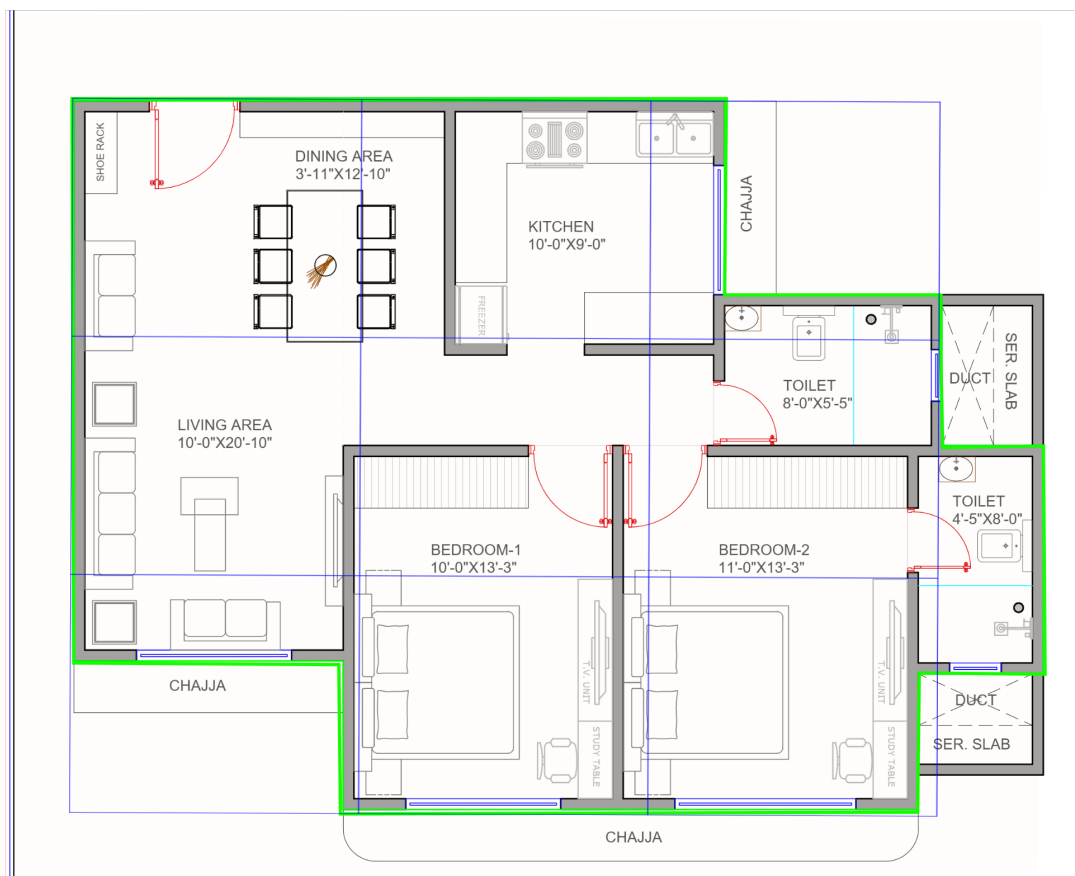
Advance Marmsthan Analysis



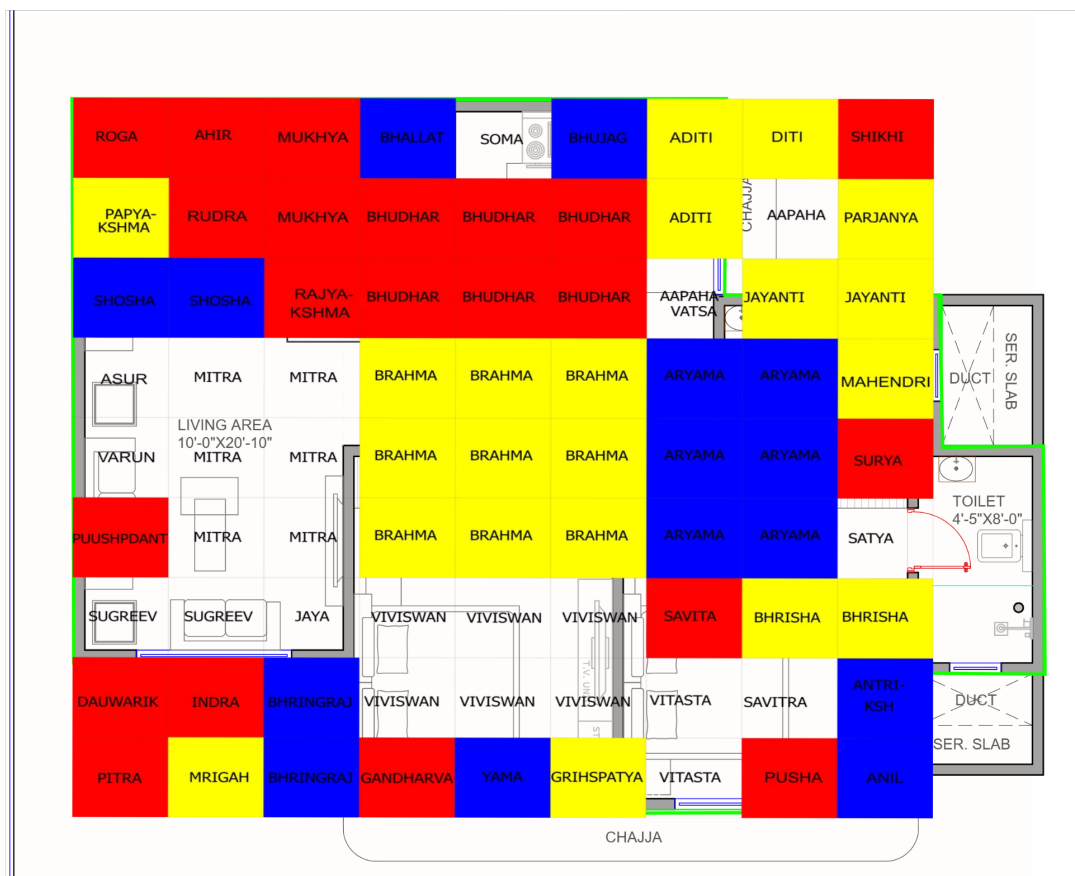
Modern Vastu Numbers 64



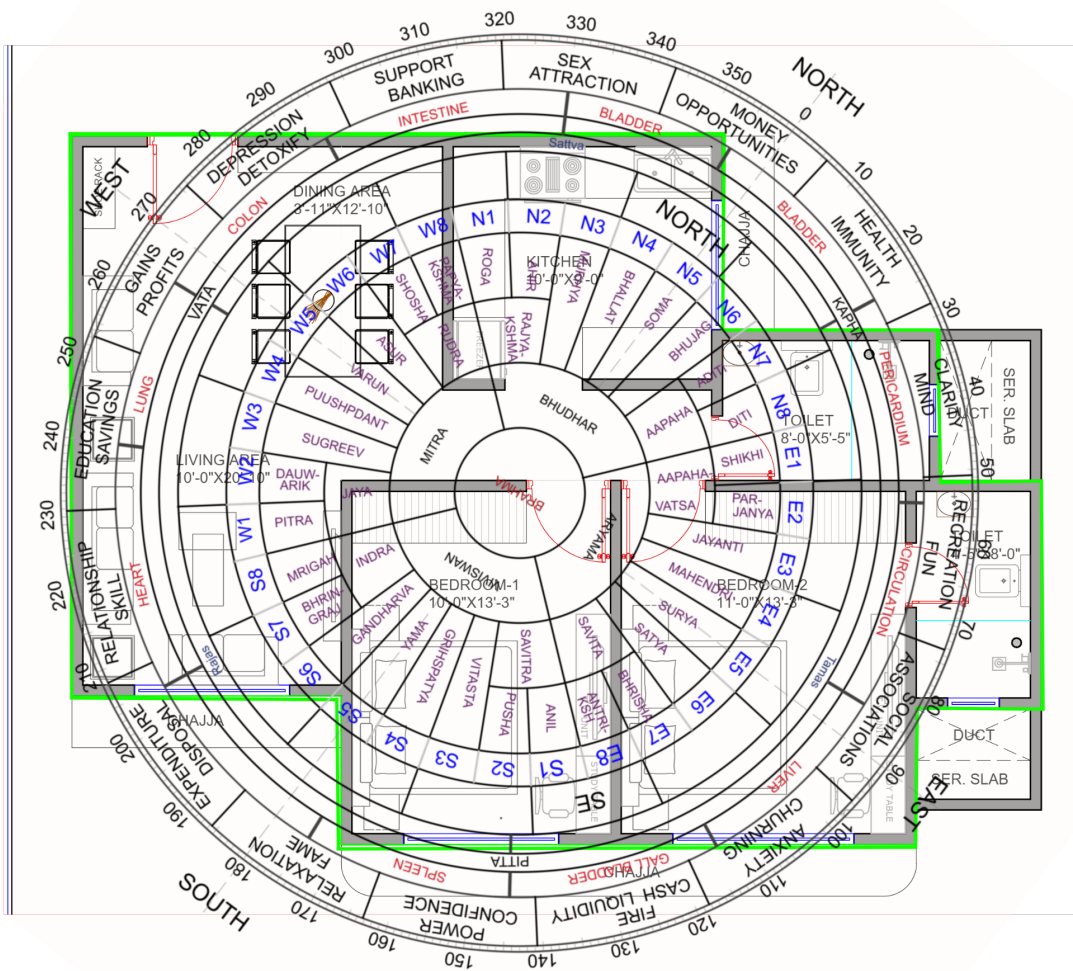
3X3 Grid



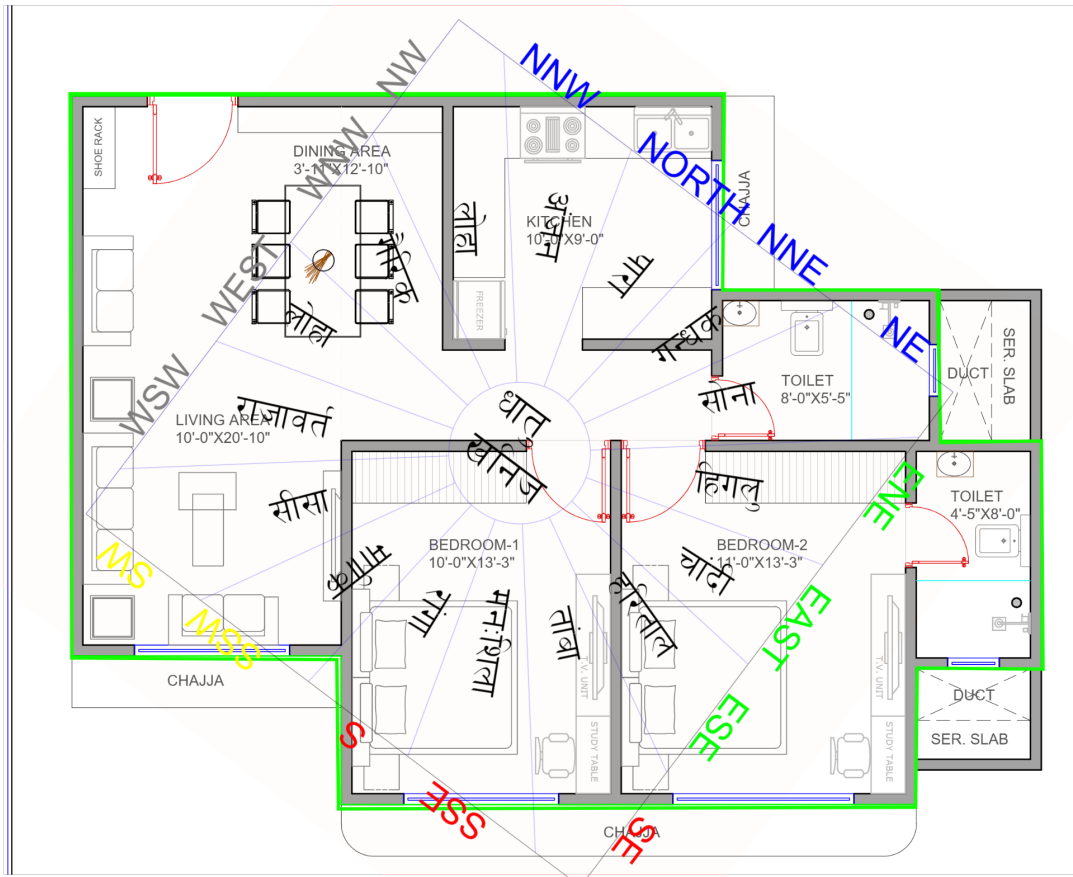
Vastu Numbers with Devata 81 (Vadic)



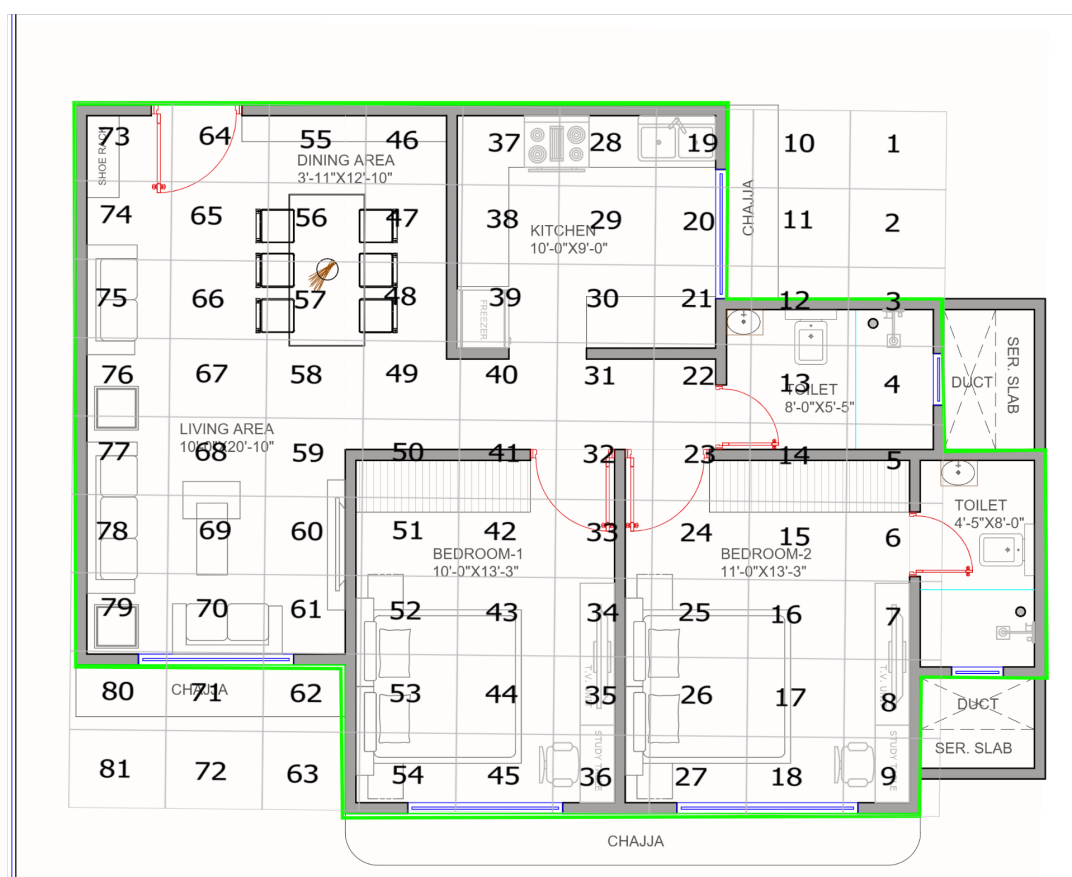
Vadic Mahavastu Chakra



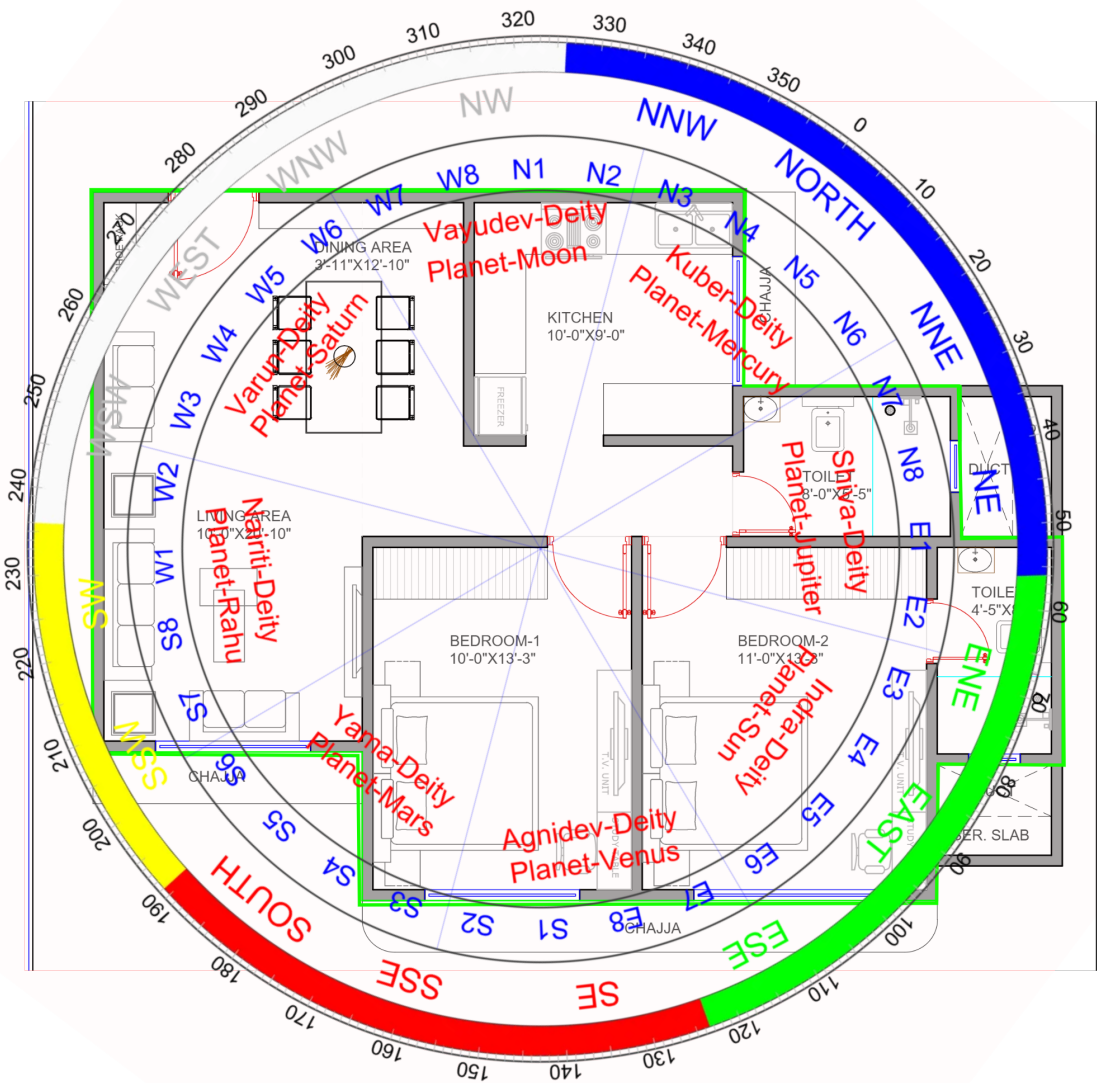
Khanija Dhatu



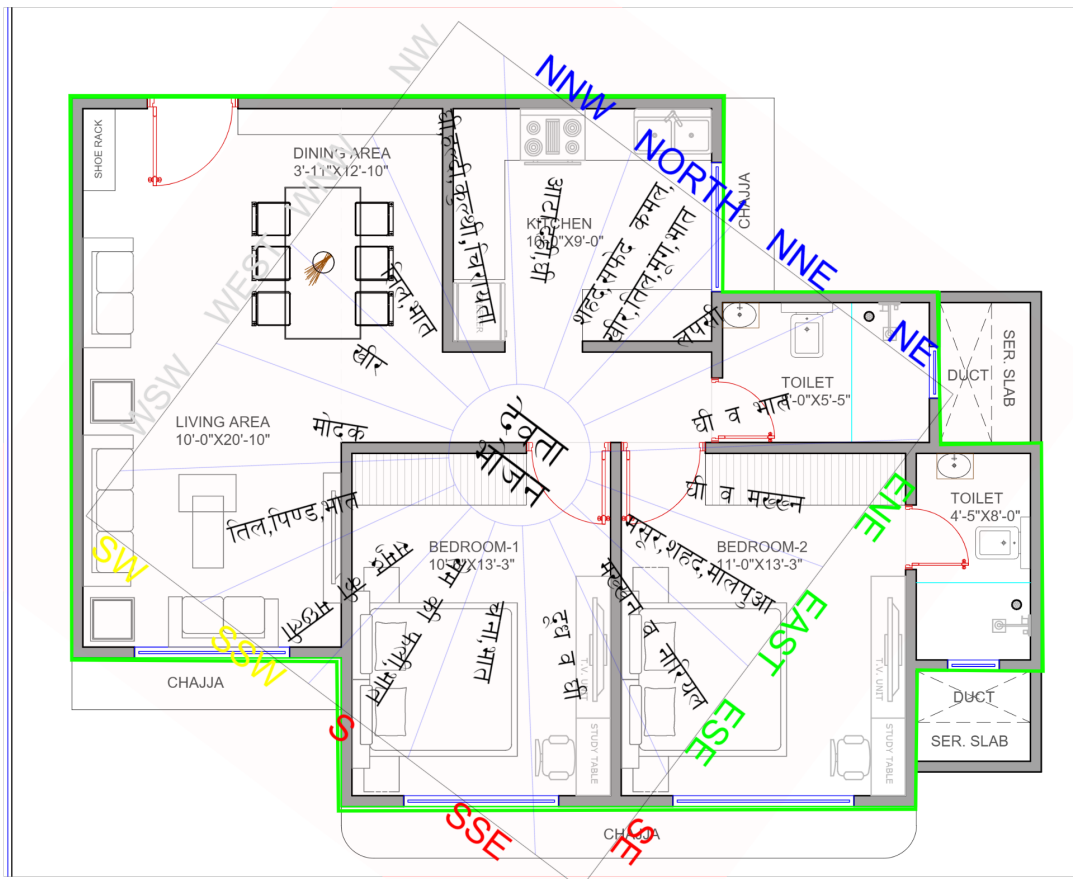
Vedic devata Numbers with Names 81



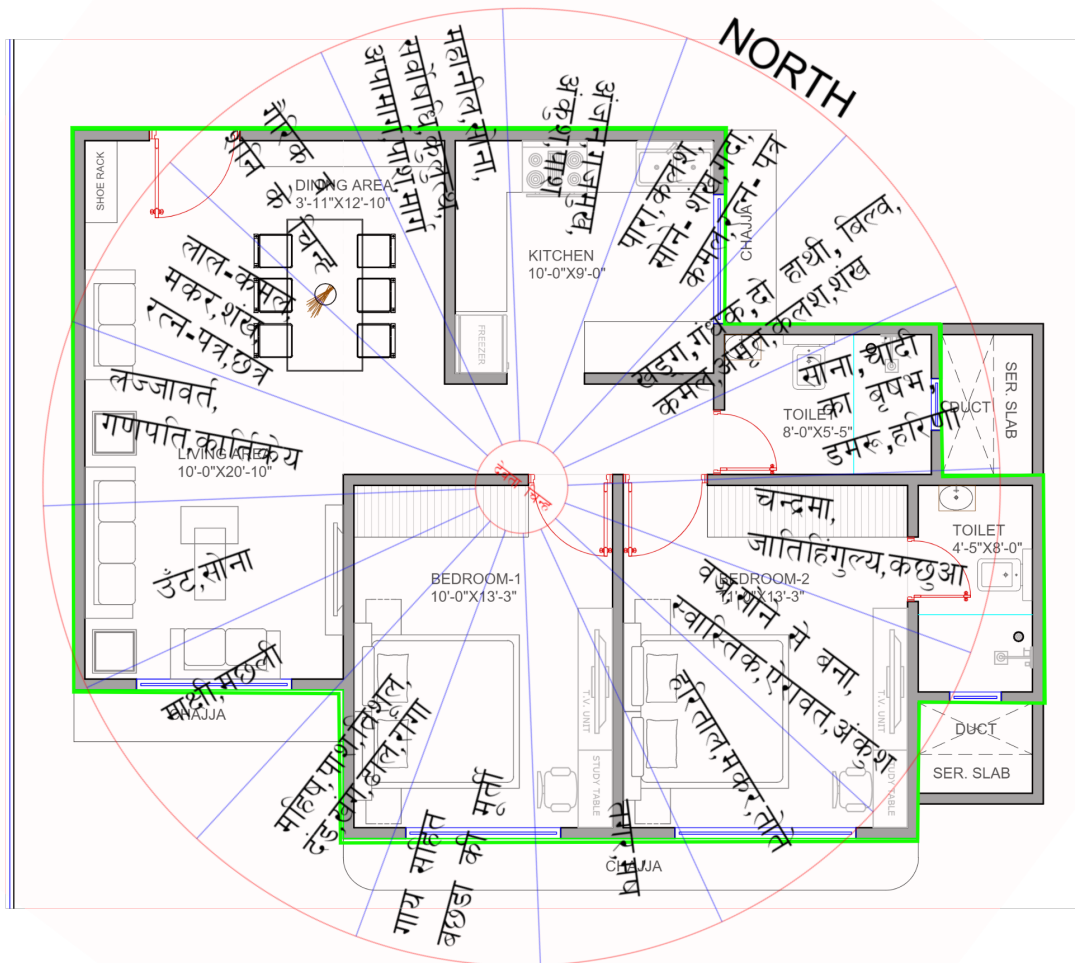
Direction Deity Planet



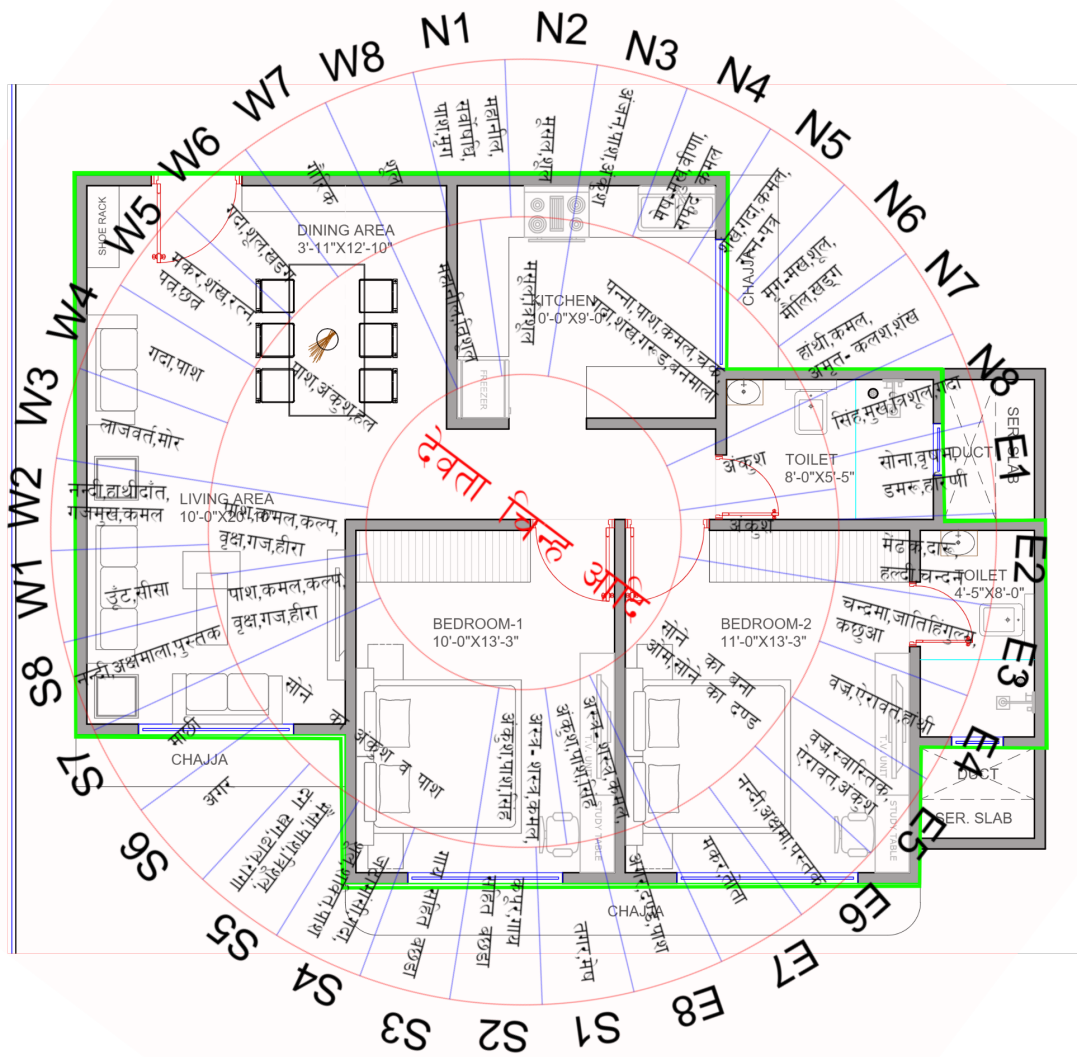
Devata Bhojan



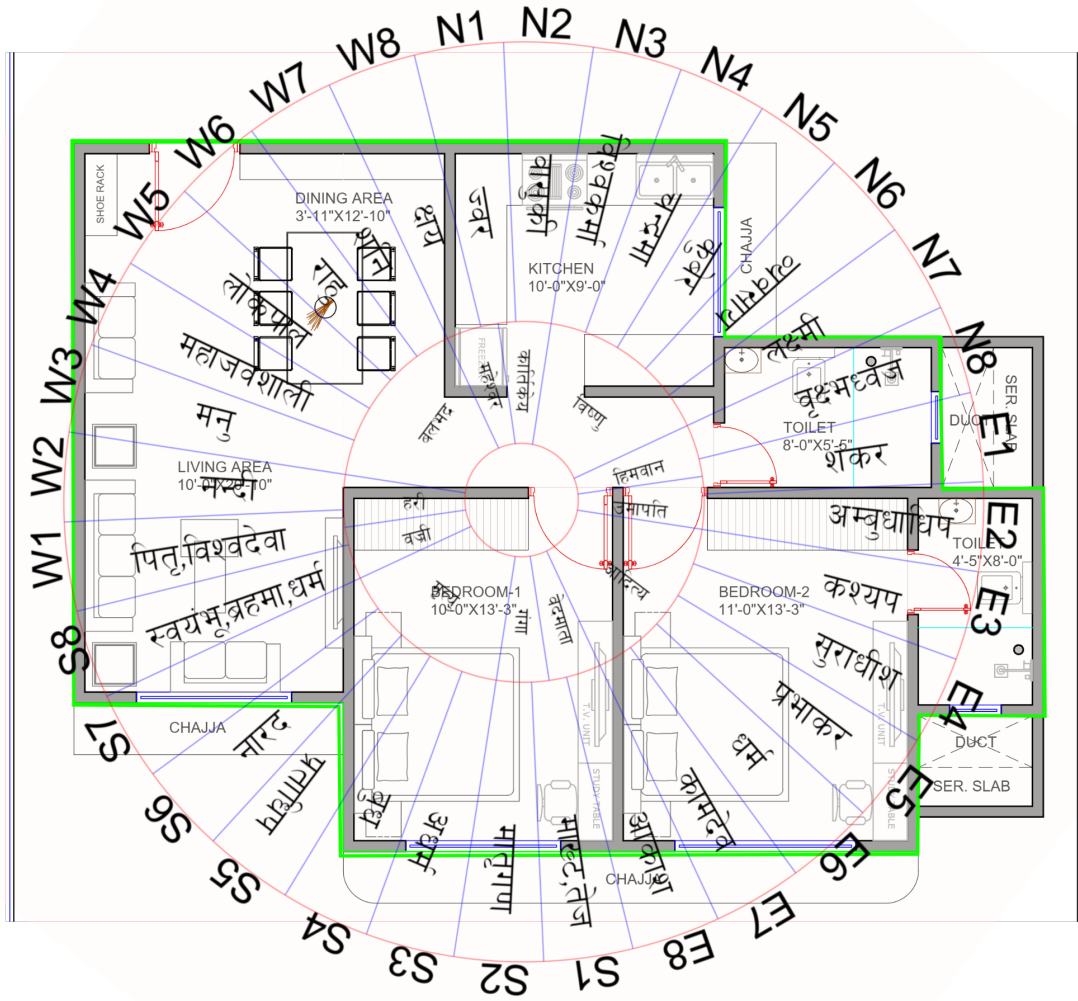
Devata Chinha

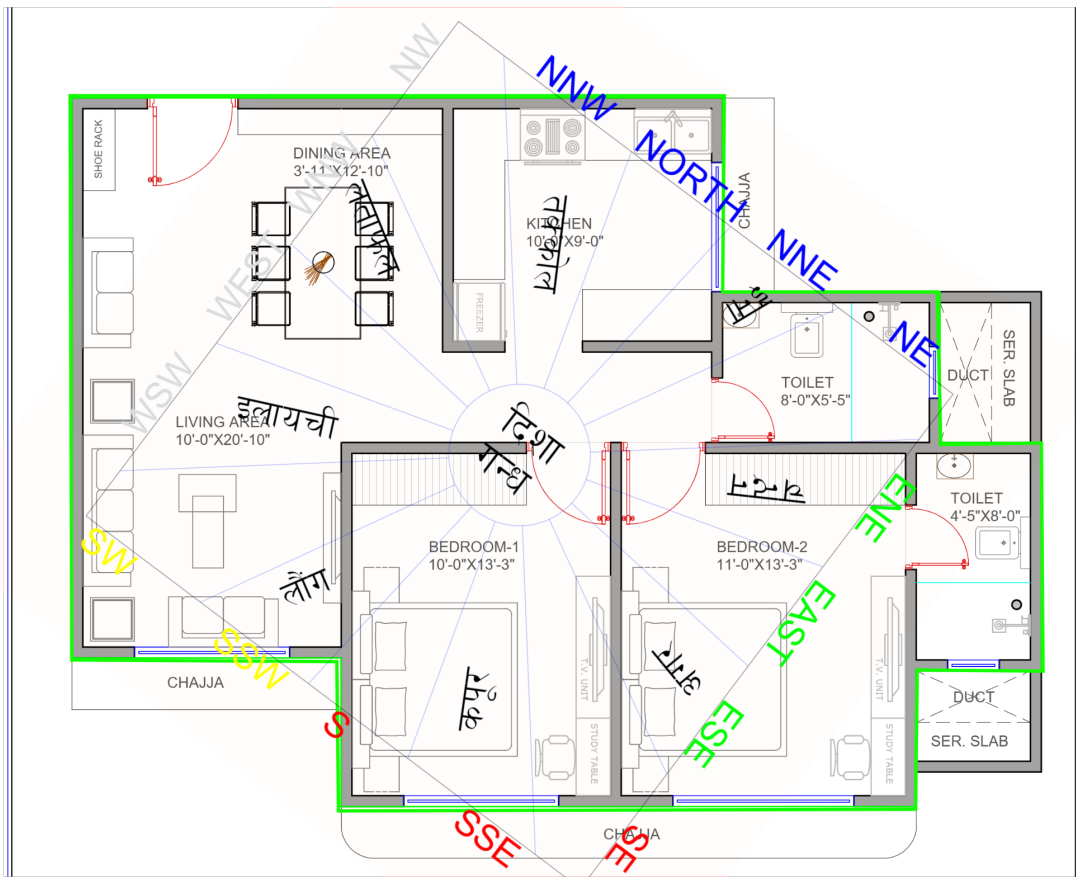


Devata Chinha Aadi

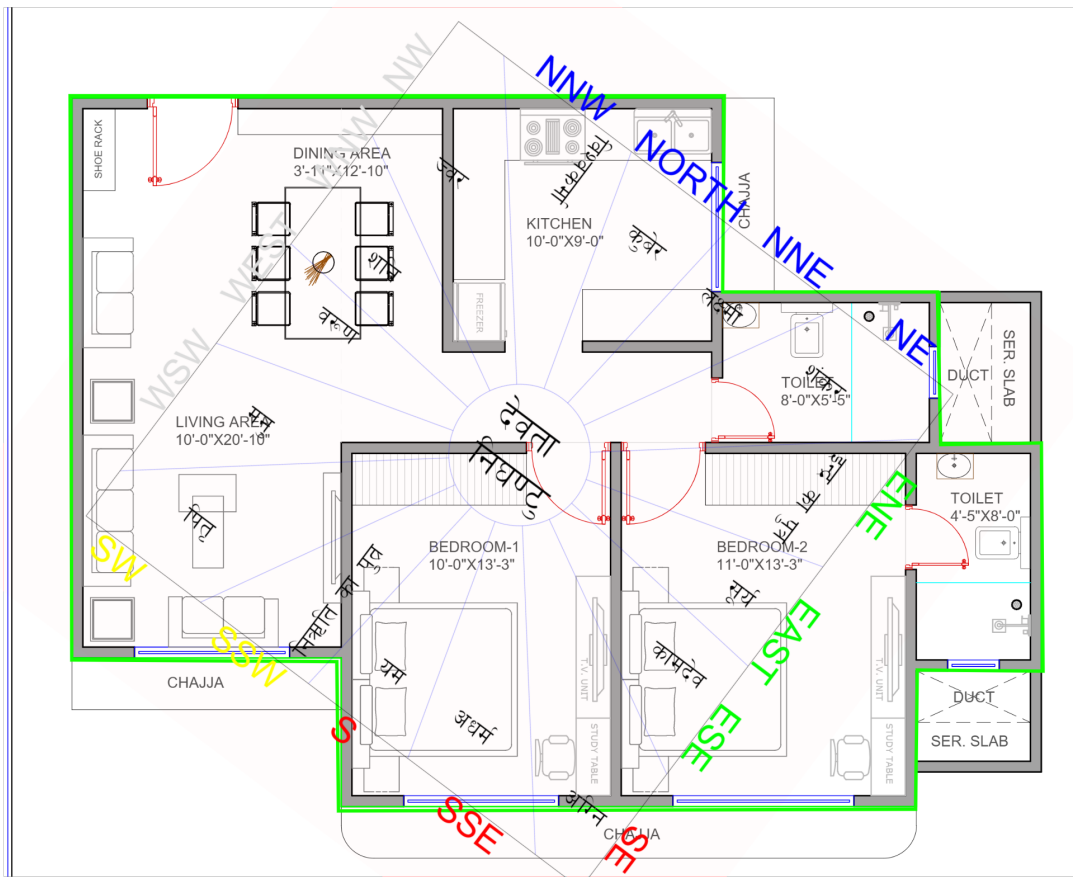


Seharumkh Achintya Vibhav

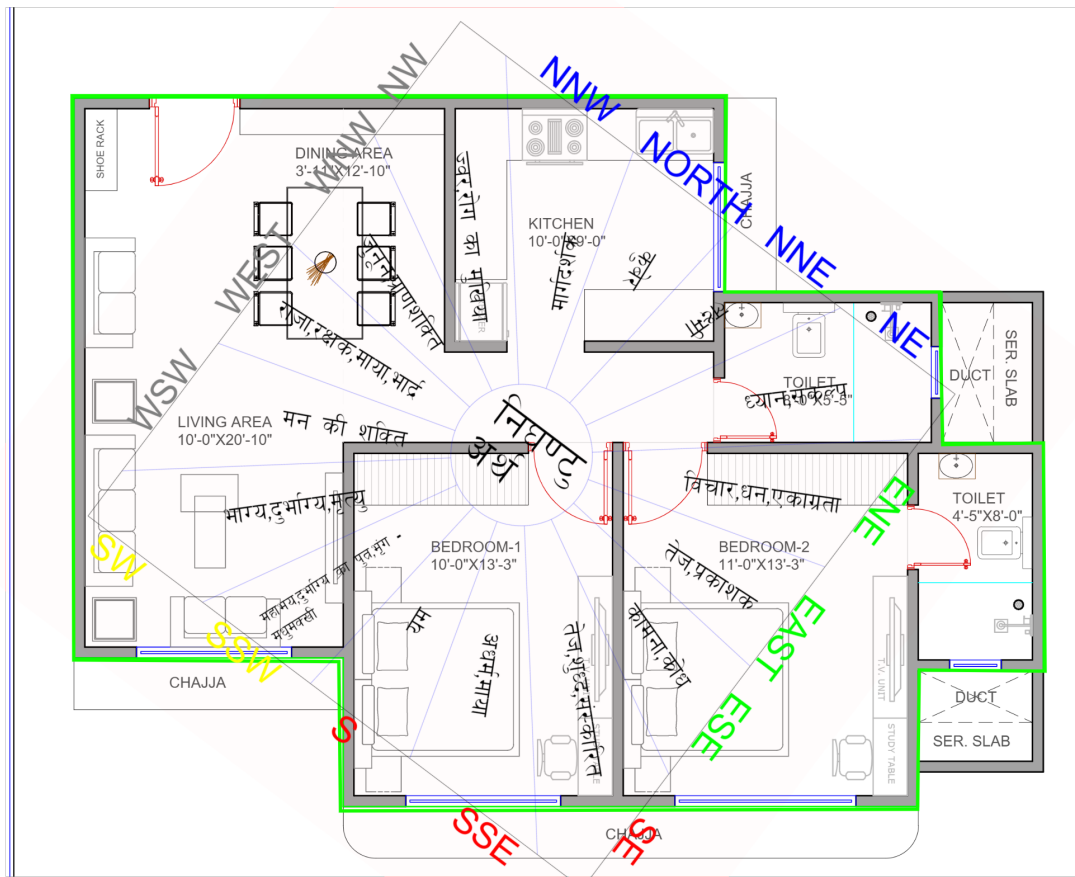




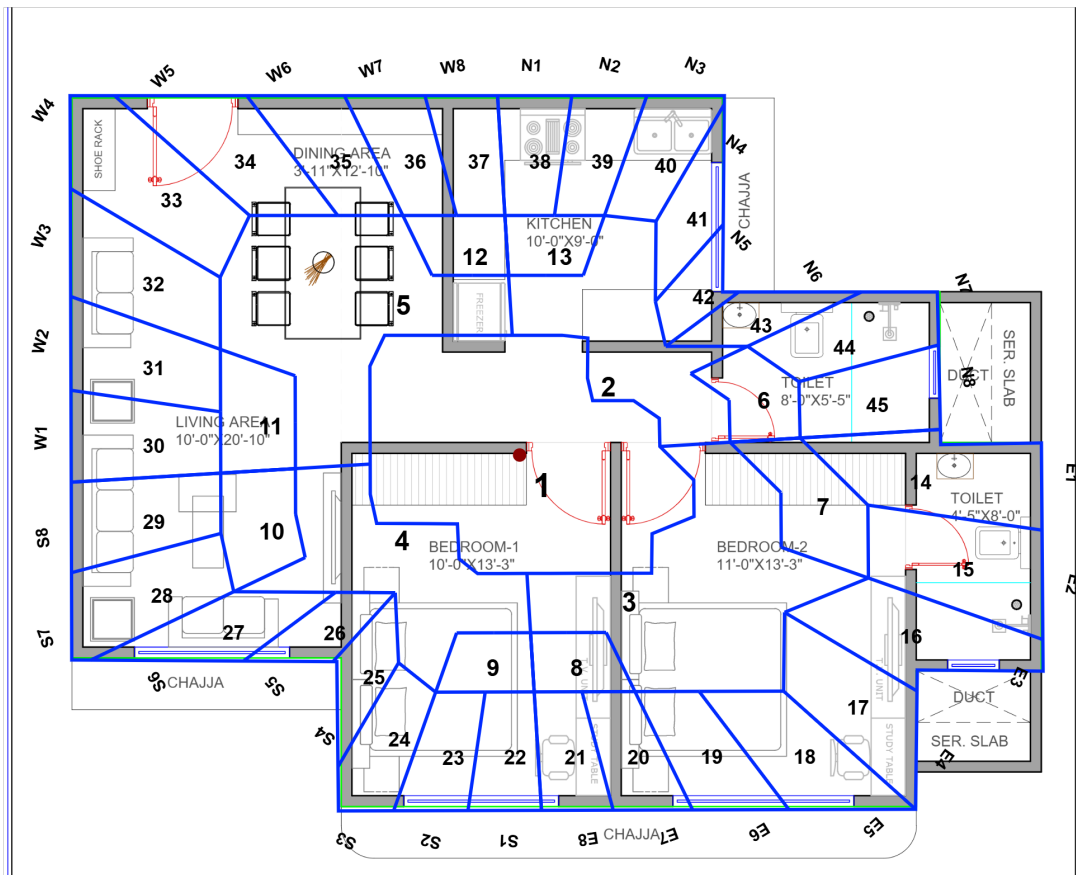
Devata Nighat



Nighantu + artha



Vedic 45 Devata (with name)



Devata Names

| SR | Devata NAME | SR | Devata NAME | SR | Devata NAME |
|----|--------------|----|-------------|----|-------------|
| 1 | BRAHMA | 16 | JAYANTI | 31 | DAUWARIK |
| 2 | BHUDHAR | 17 | MAHENDRI | 32 | SUGREEV |
| 3 | ARYAMA | 18 | SURYA | 33 | PUUSHPDANT |
| 4 | VIVISWAN | 19 | SATYA | 34 | VARUN |
| 5 | MITRA | 20 | BHRISHA | 35 | ASUR |
| 6 | AAPAHA | 21 | ANTRIKSH | 36 | SHOSHA |
| 7 | AAPAHA-VATSA | 22 | ANIL | 37 | PAPYA-KSHMA |
| 8 | SAVITA | 23 | PUSHA | 38 | ROGA |
| 9 | SAVITRA | 24 | VITASTA | 39 | AHIR |
| 10 | INDRA | 25 | GRIHSPATYA | 40 | MUKHYA |
| 11 | JAYA | 26 | YAMA | 41 | BHALLAT |
| 12 | RUDRA | 27 | GANDHARVA | 42 | SOMA |
| 13 | RAJYA-KSHMA | 28 | BHRINGRAJ | 43 | BHUJAG |
| 14 | SHIKHI | 29 | MRIGAH | 44 | ADITI |
| 15 | PARJANYA | 30 | PITRA | 45 | DITI |

Vedic 45 Devata (with name) - Table

4 Vadic Devata

| | | | | | |
|-------------|------|-------------|------|-------------|--|
| MAX 28.6 | | MIN 12.5 | | AVG 22.7 | |
| 2 | 3 | 4 | 5 | BLOCK | |
| 28.6 | 25.5 | 12.5 | 24.3 | AREA | |
| 22.7 | 22.7 | 22.7 | 22.7 | AVG AREA | |
| 25.7 | 25.7 | 25.7 | 25.7 | MAX LINE | |
| 17.6 | 17.6 | 17.6 | 17.6 | MIN LINE | |

8 Vadic Devata

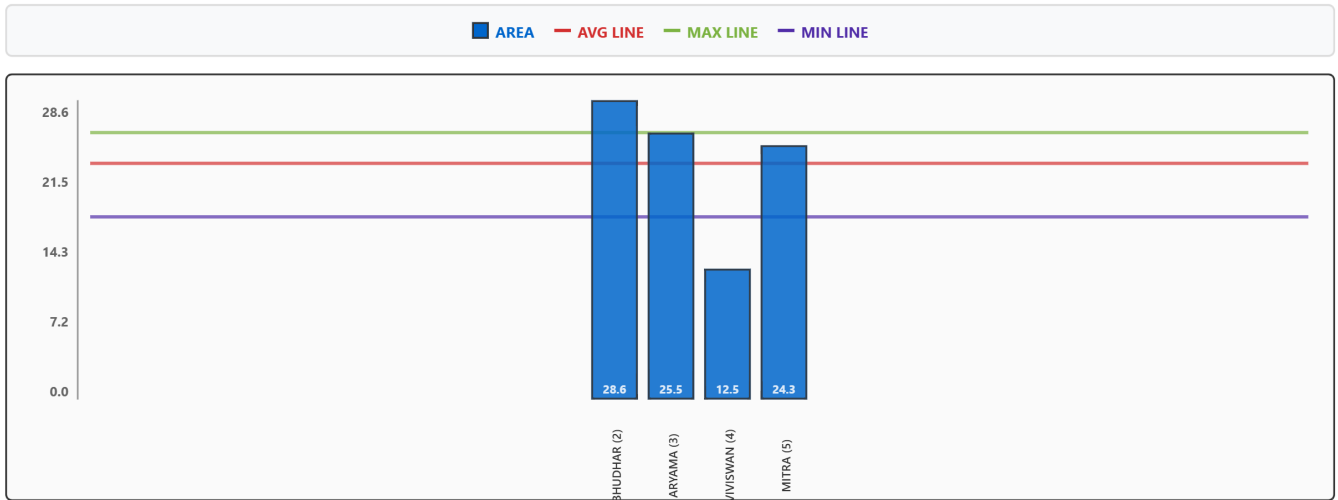
| | | | | | | | | |
|-------------|------|------------|------|------------|------|------|------|----------|
| MAX 15.6 | | MIN 5.1 | | AVG 9.8 | | | | |
| 6 | 7 | 8 | 9 | 10 | 11 | 12 | 13 | BLOCK |
| 5.1 | 9.4 | 15.6 | 13.7 | 10.0 | 11.2 | 7.5 | 6.2 | AREA |
| 9.8 | 9.8 | 9.8 | 9.8 | 9.8 | 9.8 | 9.8 | 9.8 | AVG AREA |
| 12.7 | 12.7 | 12.7 | 12.7 | 12.7 | 12.7 | 12.7 | 12.7 | MAX LINE |
| 7.5 | 7.5 | 7.5 | 7.5 | 7.5 | 7.5 | 7.5 | 7.5 | MIN LINE |

32 Vadic Devata

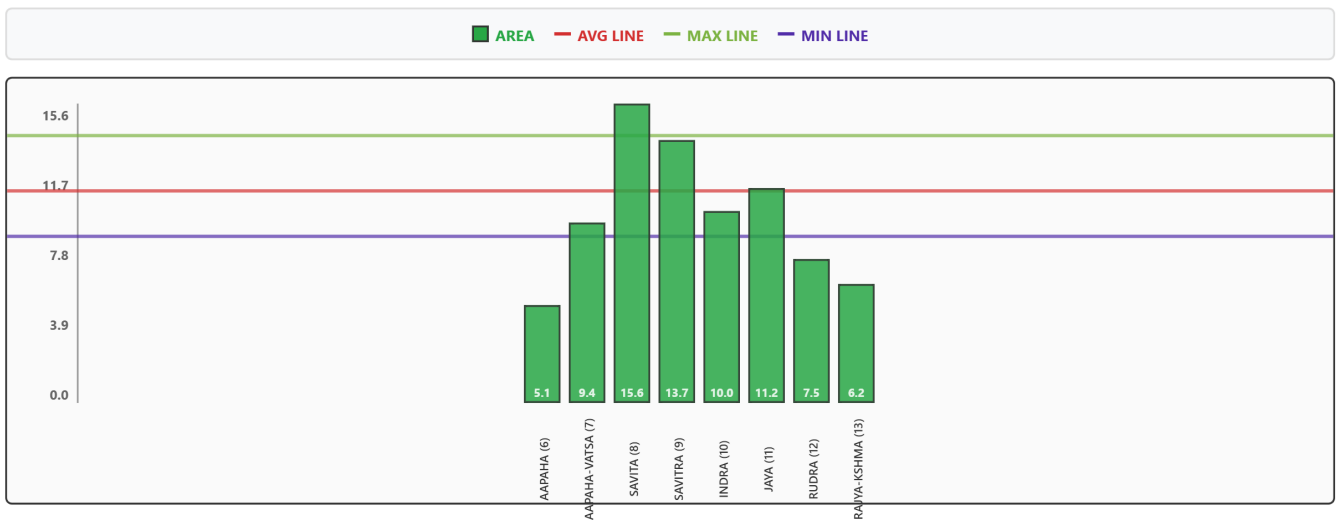
| | | | | | | | | | | | | | | | | | | | | | | | | | | | | | | | | | |
|-------------|------|------------|------|-------------|------|------|------|------|------|------|------|------|------|------|------|------|------|------|------|------|------|------|------|------|------|------|------|------|------|------|------|-------|----------|
| MAX 22.9 | | MIN 7.1 | | AVG 14.3 | | | | | | | | | | | | | | | | | | | | | | | | | | | | | |
| 14 | 15 | 16 | 17 | 18 | 19 | 20 | 21 | 22 | 23 | 24 | 25 | 26 | 27 | 28 | 29 | 30 | 31 | 32 | 33 | 34 | 35 | 36 | 37 | 38 | 39 | 40 | 41 | 42 | 43 | 44 | 45 | BLOCK | |
| 15.3 | 18.0 | 22.9 | 21.8 | 20.0 | 19.2 | 15.9 | 12.6 | 11.0 | 10.4 | 10.6 | 11.8 | 9.7 | 7.6 | 10.2 | 15.6 | 17.5 | 16.5 | 16.9 | 18.8 | 22.8 | 22.0 | 16.3 | 12.9 | 11.2 | 10.6 | 10.9 | 12.0 | 11.0 | 7.5 | 7.1 | 11.6 | AREA | |
| 14.3 | 14.3 | 14.3 | 14.3 | 14.3 | 14.3 | 14.3 | 14.3 | 14.3 | 14.3 | 14.3 | 14.3 | 14.3 | 14.3 | 14.3 | 14.3 | 14.3 | 14.3 | 14.3 | 14.3 | 14.3 | 14.3 | 14.3 | 14.3 | 14.3 | 14.3 | 14.3 | 14.3 | 14.3 | 14.3 | 14.3 | 14.3 | 14.3 | AVG AREA |
| 18.6 | 18.6 | 18.6 | 18.6 | 18.6 | 18.6 | 18.6 | 18.6 | 18.6 | 18.6 | 18.6 | 18.6 | 18.6 | 18.6 | 18.6 | 18.6 | 18.6 | 18.6 | 18.6 | 18.6 | 18.6 | 18.6 | 18.6 | 18.6 | 18.6 | 18.6 | 18.6 | 18.6 | 18.6 | 18.6 | 18.6 | 18.6 | 18.6 | MAX LINE |
| 10.7 | 10.7 | 10.7 | 10.7 | 10.7 | 10.7 | 10.7 | 10.7 | 10.7 | 10.7 | 10.7 | 10.7 | 10.7 | 10.7 | 10.7 | 10.7 | 10.7 | 10.7 | 10.7 | 10.7 | 10.7 | 10.7 | 10.7 | 10.7 | 10.7 | 10.7 | 10.7 | 10.7 | 10.7 | 10.7 | 10.7 | 10.7 | 10.7 | MIN LINE |

Vedic 45 Devata (with name) - Chart

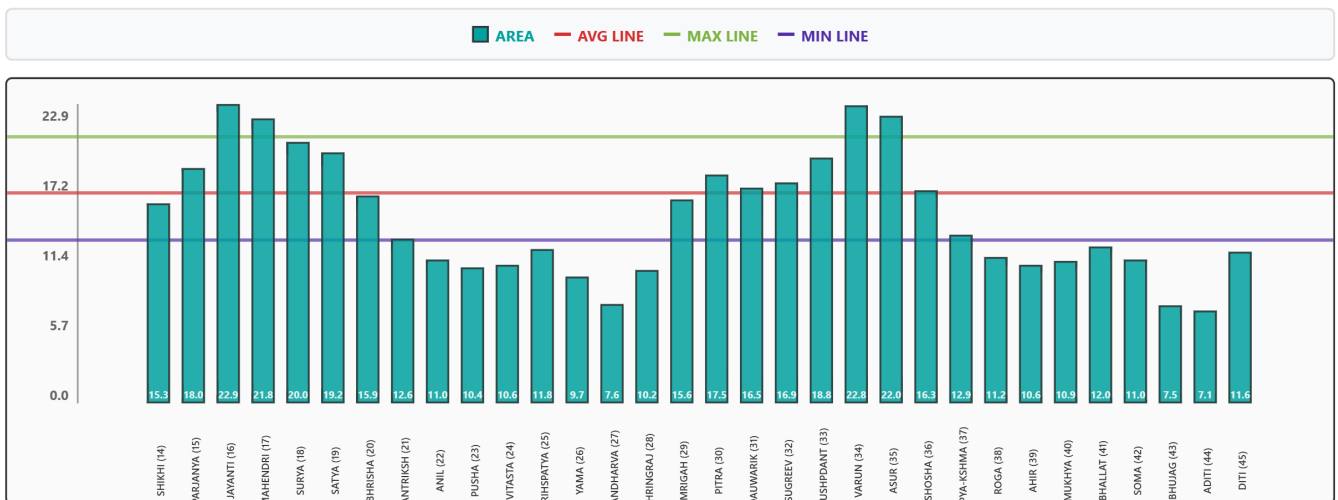
4 Vedic Devata



8 Vedic Devata



32 Vedic Devata



Devata Names

| SR | Devata NAME | SR | Devata NAME | SR | Devata NAME |
|----|--------------|----|-------------|----|-------------|
| 1 | BRAHMA | 16 | JAYANTI | 31 | DAUWARIK |
| 2 | BHUDHAR | 17 | MAHENDRI | 32 | SUGREEV |
| 3 | ARYAMA | 18 | SURYA | 33 | PUUSHPDANT |
| 4 | VIVISWAN | 19 | SATYA | 34 | VARUN |
| 5 | MITRA | 20 | BHRISHA | 35 | ASUR |
| 6 | AAPAHA | 21 | ANTRIKSH | 36 | SHOSHA |
| 7 | AAPAHA-VATSA | 22 | ANIL | 37 | PAPYA-KSHMA |
| 8 | SAVITA | 23 | PUSHA | 38 | ROGA |
| 9 | SAVITRA | 24 | VITASTA | 39 | AHIR |
| 10 | INDRA | 25 | GRIHSPATYA | 40 | MUKHYA |
| 11 | JAYA | 26 | YAMA | 41 | BHALLAT |
| 12 | RUDRA | 27 | GANDHARVA | 42 | SOMA |
| 13 | RAJYA-KSHMA | 28 | BHRINGRAJ | 43 | BHUJAG |
| 14 | SHIKHI | 29 | MRIGAH | 44 | ADITI |
| 15 | PARJANYA | 30 | PITRA | 45 | DITI |

Entrance Analysis Report

| Entrance | Dir | Energy | Effect | Non-Demo Remedy | Demo Remedy |
|------------|---------------|-------------------------|---|--|-----------------------------------|
| Entrance 1 | N5 | Supreme Positive | Maximum financial inflow | Water fountain near entrance, blue decor | None - preserve natural alignment |
| | E5 | Extremely Positive | Pure growth and health | Wooden door, morning sunlight | None if perfectly aligned |
| | S5 | Slight Negative | Competitive pressure | Sports achievement display | Shift toward true South |
| | W5 | Highly Negative | Chronic health issues | Healing symbols | Complete relocation |
| | N6 | Highly Positive | Wealth with wisdom/knowledge | Library visible from entrance, bookshelf | Clear NE corner obstruction |
| | E6 | Supreme Positive | Ultimate vitality | Exercise equipment visible | Health-focused redesign |
| | S6 | Positive | Authority and discipline | Strong door, security systems | None if well-designed |
| | W6 | Slight Negative | Delayed results | Patience symbols, long-term clocks | Shift toward true West |
| | N7 | Very Positive | Clear financial decisions | Crystal transparency elements | Remove visual barriers |
| | E7 | Very Positive | Educational advancement | Bookshelves, learning tools | Connect to study areas |
| | S7 | Slight Positive | Leadership development | Leadership library display | Strengthen structure |
| | W7 | Neutral | Slow but certain progress | Progress trackers | Improve pathway lighting |
| | N8 | Positive | Healing-related income | Green plants, wellness symbols | Connect to healing spaces |
| | E8 | Positive | New beginnings energy | 'New start' symbols display | Clear old energy patterns |
| | S8 | Positive | Responsibility burden | Team photos, delegation charts | Share entrance function |
| | W8 | Very Positive | Pure contentment | Metallic decor, sunset lighting | None if perfect alignment |
| | E1 | Highly Positive | Ancestral wisdom wealth | Family heritage display | Open ancestral connection space |
| | S1 | Slight Positive | Gradual development | Step-by-step progress display | Gentle slope design |
| | W1 | Slight Negative | Reputation pressure | PR management tools | Relocate if possible |
| | N1 | Very Positive | Creative wealth flow but scattered energy | Block with aluminum strip on door frame | Shift entrance toward true West |
| | E2 | Supreme Positive | Divine energy portal | Keep absolutely clean and pure | Never block or close |
| | S2 | Critical Negative | Fire conflict and financial loss | Water elements, blue colors | Close and relocate entrance |
| | W2 | Negative | Conflict and stress | Peace symbols, resolution area | Major structural change |
| | N2 | Positive | Social networking wealth | Iron strip installation, silver decor | Realign to pure Northwest |
| E3 | Very Positive | Spiritual communication | Meditation corner visible | Create spiritual pathway | |

| Entrance | Dir | Energy | Effect | Non-Demo Remedy | Demo Remedy |
|-------------------|-----|--------------------|----------------------------|----------------------------------|---------------------------------|
| Entrance 1 | S3 | Negative | Financial friction | Smooth flow symbols | Remove obstacles to flow |
| | W3 | Highly Negative | Stability destruction | Heavy stone elements | Close permanently |
| | N3 | Slight Positive | Fast digital opportunities | Heavy brass door hardware | Minor adjustment toward North |
| | E4 | Very Positive | Divine inspiration flow | Vision boards, inspirational art | Maximize morning light |
| | S4 | Slight Positive | Earned recognition | Trophy case, achievement wall | Enhance with proper lighting |
| | W4 | Extremely Negative | Major financial loss | Emergency closure | Demolish and rebuild |
| | N4 | Positive | Balanced career growth | Career symbols display | None needed if aligned properly |

Space Analysis Report

| Space | Dir | Energy | Effect | Non-Demo Remedy | Demo Remedy |
|-------------------------|-----|------------------|---|--|-----------------------------------|
| BEDROOM #1 | S | Negative | Overthinking, anxiety, weak immunity | Use pastel tones; indoor plants | Move to South-West or West |
| | ENE | Neutral | Energetic, creative but less grounded | Bed in SW corner; head South | Move to South-West |
| | E | Negative | Overthinking, anxiety, weak immunity | Use pastel tones; indoor plants | Move to South-West or West |
| | ESE | Negative | Stress and irritation in couples | Add cool tones, diffuser | Shift to South-West |
| | SE | Negative | Stress and irritation in couples | Add cool tones, diffuser | Shift to South-West |
| | SSE | Neutral | Ambitious but tension-prone | Use pastel bedding; avoid metals | Shift to South-West |
| | SSW | Positive | Family unity, emotional bonding | Heavy furniture in SW | — |
| BEDROOM #2 | ENE | Neutral | Energetic, creative but less grounded | Bed in SW corner; head South | Move to South-West |
| | E | Negative | Overthinking, anxiety, weak immunity | Use pastel tones; indoor plants | Move to South-West or West |
| | ESE | Negative | Stress and irritation in couples | Add cool tones, diffuser | Shift to South-West |
| | SE | Negative | Stress and irritation in couples | Add cool tones, diffuser | Shift to South-West |
| | SSE | Neutral | Ambitious but tension-prone | Use pastel bedding; avoid metals | Shift to South-West |
| | S | Negative | Overthinking, anxiety, weak immunity | Use pastel tones; indoor plants | Move to South-West or West |
| | SSW | Positive | Family unity, emotional bonding | Heavy furniture in SW | — |
| LIVING ROOM | SSW | Negative | Creates laziness, heaviness, and less movement | Use brighter wall colors; mirror on North wall | Shift living toward North or East |
| | SW | Negative | Creates laziness, heaviness, and less movement | Use brighter wall colors; mirror on North wall | Shift living toward North or East |
| | WSW | Neutral | Promotes comfort but reduces activity | Add brighter tones and mirror on East wall | — |
| | W | Negative | Creates laziness, heaviness, and less movement | Use brighter wall colors; mirror on North wall | Shift living toward North or East |
| DINING ROOM | WNN | Neutral | Encourages guest interactions & lively dinners. | Add grounding elements; avoid red tones. | — |
| | W | Negative | Can cause family conflicts & overeating. | Use bright lighting & cooler colors. | Relocate to East or South. |
| | NW | Neutral | Encourages guest interactions & lively dinners. | Add grounding elements; avoid red tones. | — |
| KITCHEN | NW | Neutral | Can increase restlessness if cluttered. | Keep ventilated; add greenery. | — |
| | NNW | Negative | Triggers wasteful spending and irregular meals. | Keep clean; add cool tones. | Relocate to SE. |
| | N | Negative | Causes financial instability and mental stress. | Use blue/green tiles; avoid gas stove on North wall. | Relocate to SE or SSE. |
| TOILET /BATHROOM | NNE | Highly Negative | Pollutes clarity and freshness; affects immunity. | Use blue tiles, keep dry; install exhaust fan always ON. | Relocate toilet if possible. |
| | NE | Highly Negative | Pollutes clarity and freshness; affects immunity. | Use blue tiles, keep dry; install exhaust fan always ON. | Relocate toilet if possible. |
| | ENE | Neutral-Negative | Can affect concentration and mental peace. | Use pastel green tones, keep well-ventilated. | Move to ESE or WNW. |